



St. Louis Community College  
Expanding Minds. Changing Lives.

2022 STATE OF THE ST. LOUIS  
**WORKFORCE**  
The Pathway to Job Growth



St. Louis Community College stlcc.edu/STLworkforce

# A Report to the Region

## How will St. Louis create the Pathway to Job Growth?

**14,700 new jobs  
created annually by  
first-year startups**



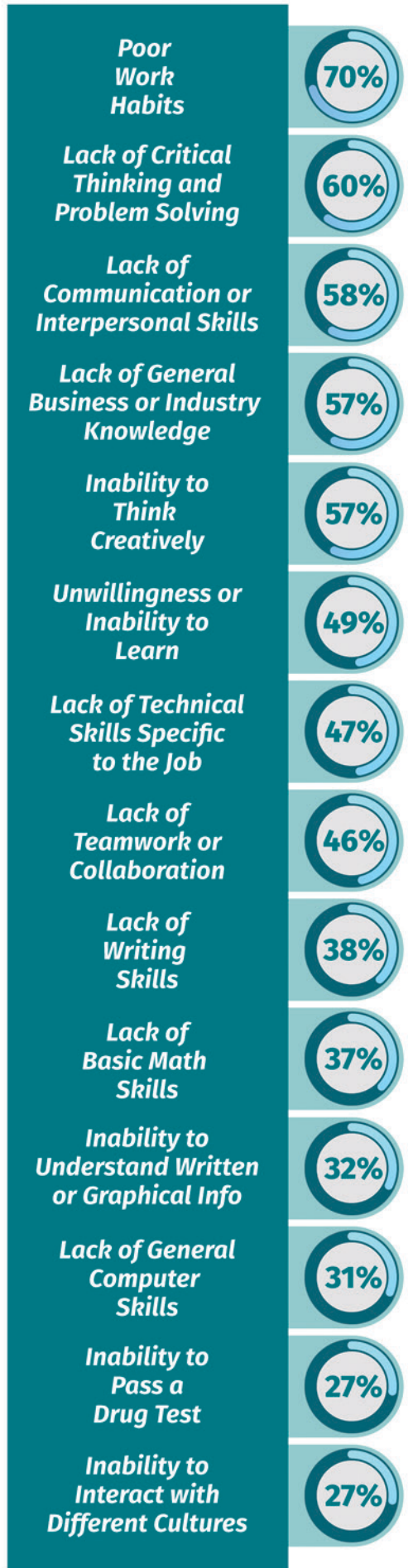
**26% of employees  
still working remotely**

**408,000 workers  
with a high school  
diploma or less**

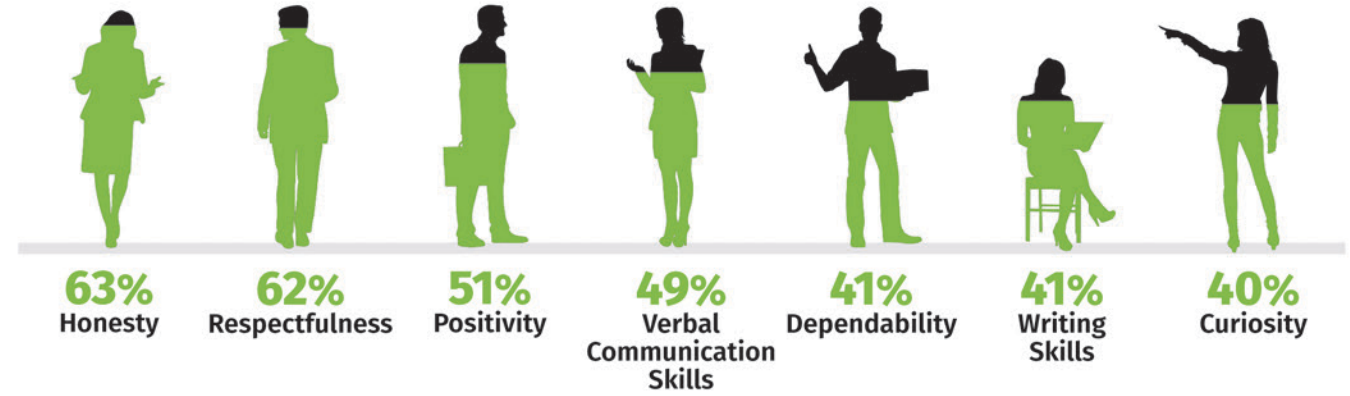


# Finding The Right Skills

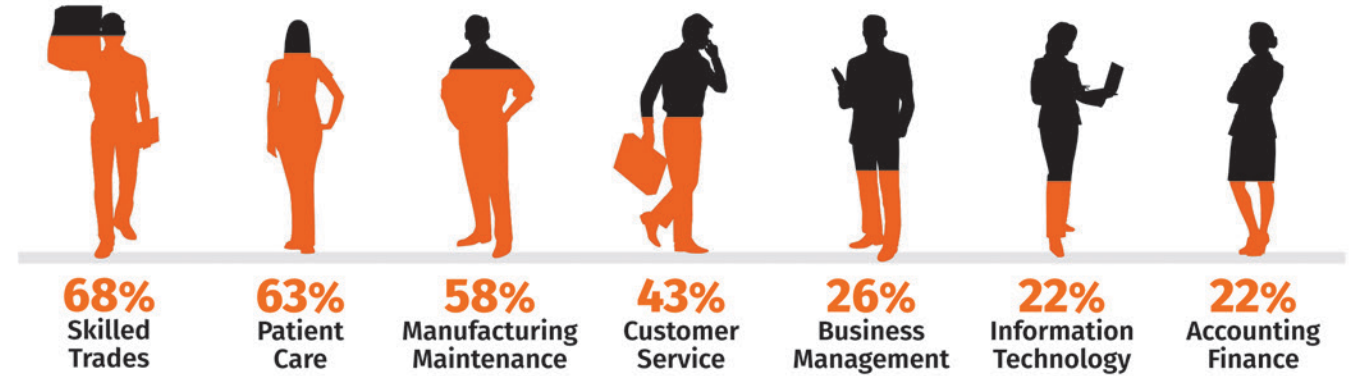
## Applicant Shortcomings



## Top Strengths Seen in Most or All Job Applicants



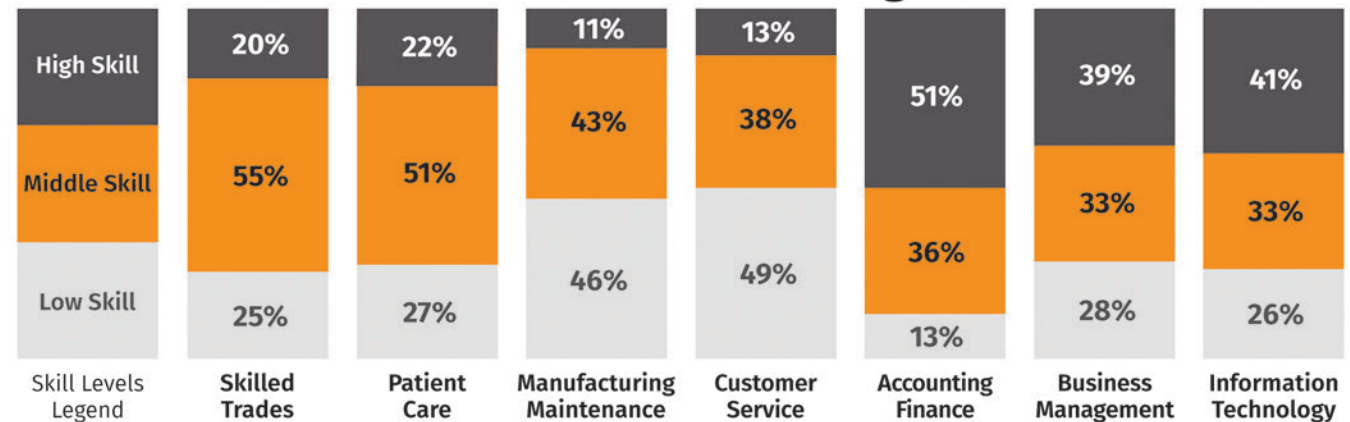
## Skill Shortages by Business Functional Areas



## Measures Taken to Address Skill Shortages



## Skill Levels Needed to Meet Skill Shortages



Living St. Louis: State of the St. Louis Workforce

Watch or livestream **November 21, 7 pm**  
On demand at [ninepbs.org](http://ninepbs.org)

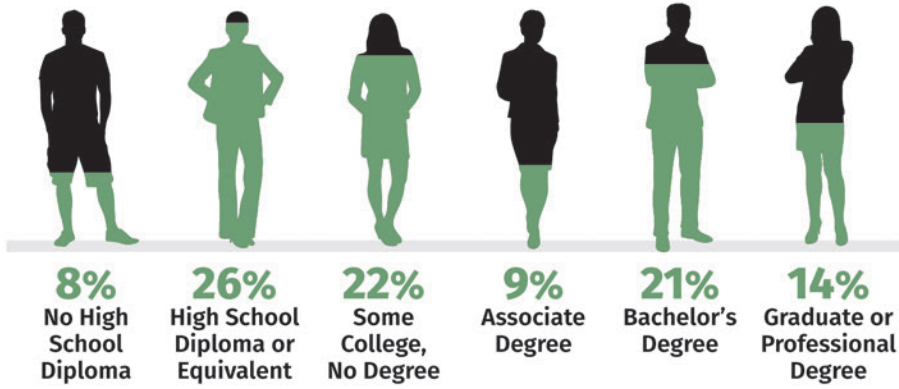


Pathways to Work



# Workforce Insights

## St. Louis MSA Educational Attainment

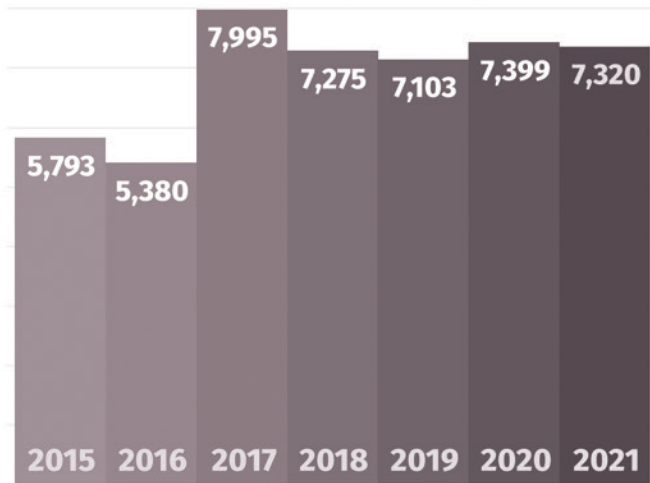


**34%**  
have a high school diploma or less

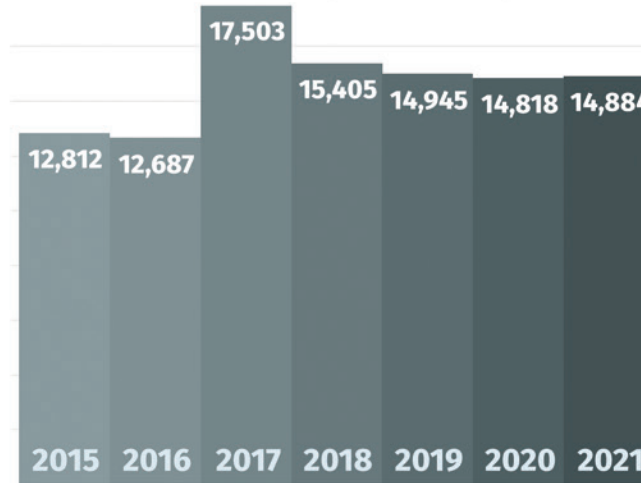
## Characteristics of a "Good Job"



## St. Louis Startup Companies



## Jobs Created by Startups



First-year startup data provided by SourceLink. Aggregate St. Louis area data includes St. Louis City and the Missouri counties of St. Louis, Franklin, Warren, Jefferson, Lincoln, and St. Charles.

**Skill Levels Required**

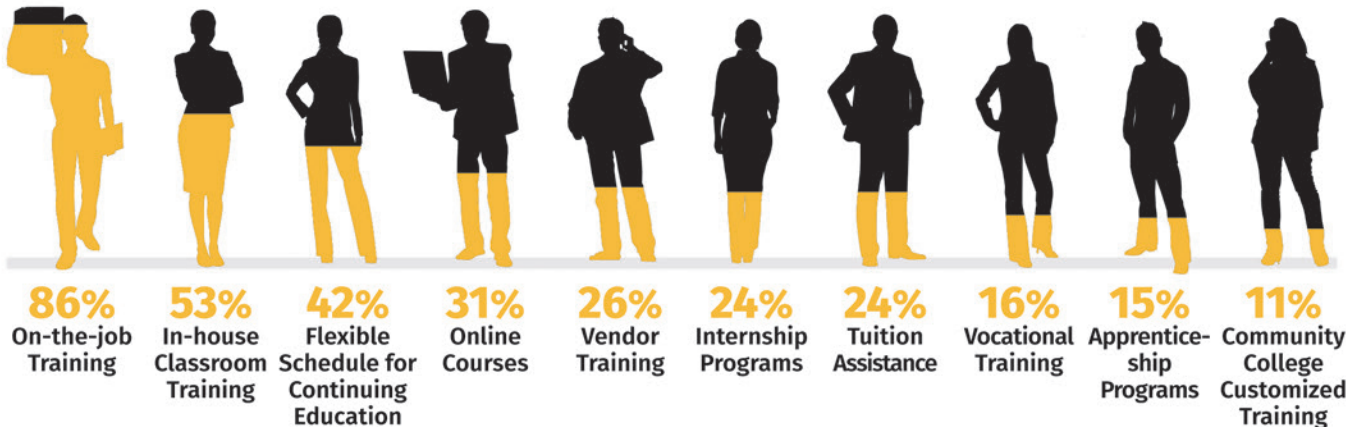
- High-skill 27%
- Middle-skill 38%
- Low-skill 36%

**60%**  
employers with middle-skill positions

**Firms Offering Remote Work**

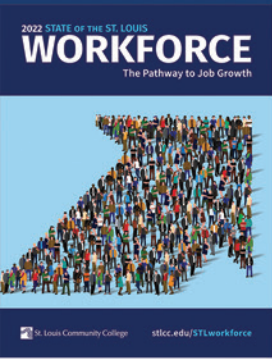
2022	26%
2021	23%
2020	61%

## Methods to Assist Workers for New or Increased Skills





# Download the report at [stlcc.edu/STLworkforce](http://stlcc.edu/STLworkforce)

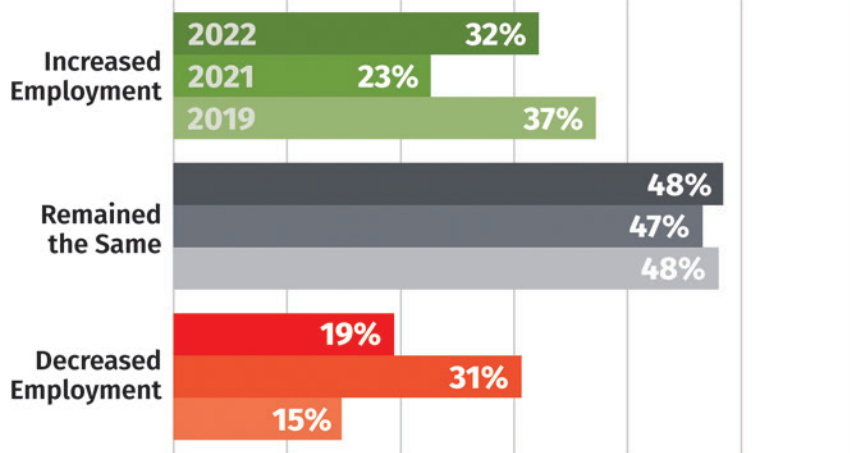


As we emerge from a global pandemic, we continue to examine the region's workforce needs and provide real time intelligence to support your business strategies. We are planning for several new projects on each of the STLCC campuses, funded by your support of Proposition R last August (now known as **STLCC Transformed**). Upgraded facilities will support cutting-edge programs to meet the demand for high-tech job training. Our goal, both today and in the future, is to prepare students with the skills needed in critical industries: healthcare, information technology, financial services, biotechnology, transportation, and manufacturing. We look forward to serving our community with relevant educational opportunities that include degrees, certificates, short term skills training and professional development and continuing education. – *Dr. Jeff Pittman, Chancellor*



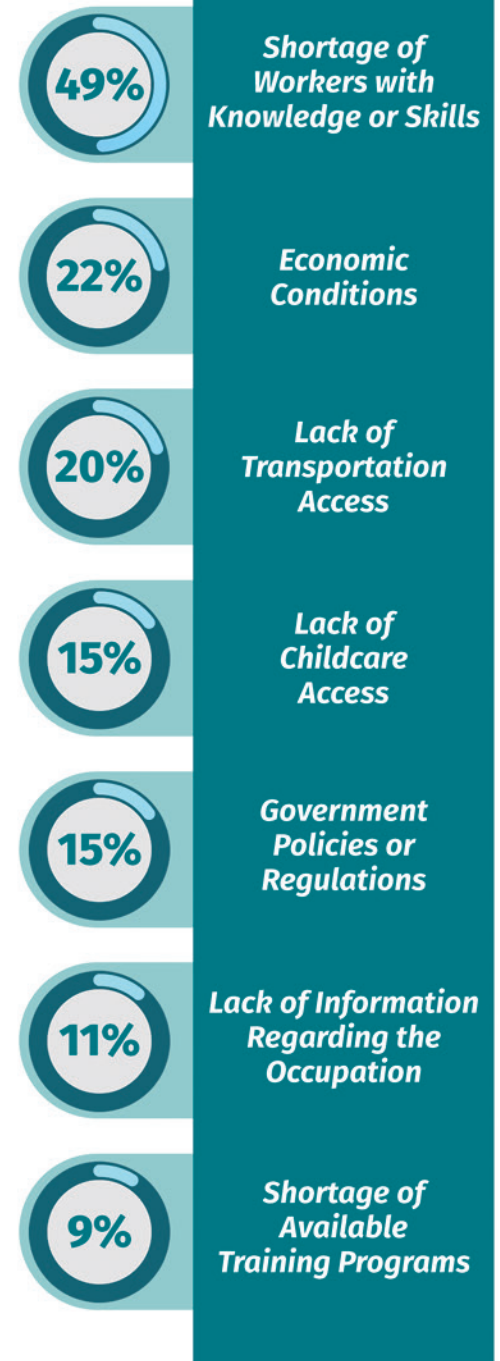
## Employer Outlook

### Employment Levels during the Last 12 Months

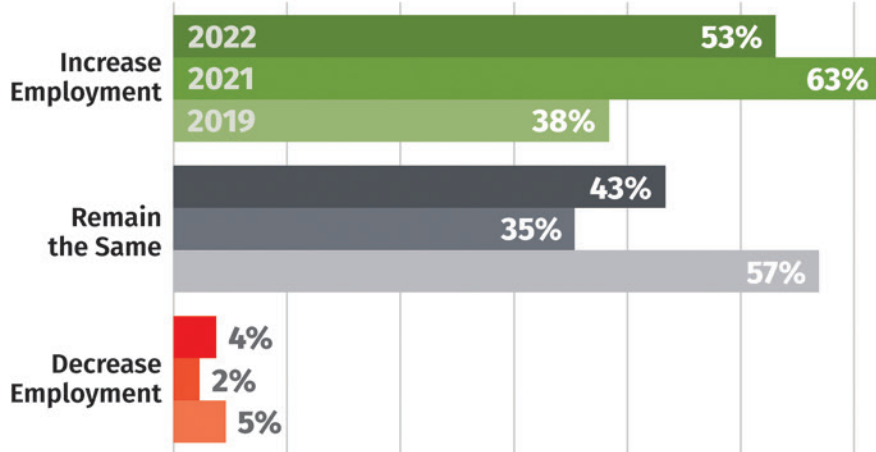


**63%**  
experiencing a shortage of applicants

### Barriers to Expanding Employment



### Employment Plans for the Next 12 Months



**53%**  
plan to hire in the next 12 months

### Methods to Add Workers



The State of St. Louis Workforce report and events are produced annually by St. Louis Community College's Workforce Solutions Group. Workforce Solutions Group connects job seekers with employment providers through customized and accelerated training, and offers opportunities for lifelong learning through continuing education. Visit us at [stlcc.edu/workforce](http://stlcc.edu/workforce).