



## **Emergency Evacuation Procedure Maps**

**for:**

Saint Louis Community College  
Meramec

11333 Big Bend Rd, Meramec, MO 63122

## **Evacuation Procedure Maps Contact(s):**

President: Feleccia Moore-Davis  
314-984-7761

Sr. Facility Manager: Dennis Dill  
314-984-7740

Police Lt.: Adis Becirovic  
314-984-7808

EHS Specialist:

**Revised Date:**

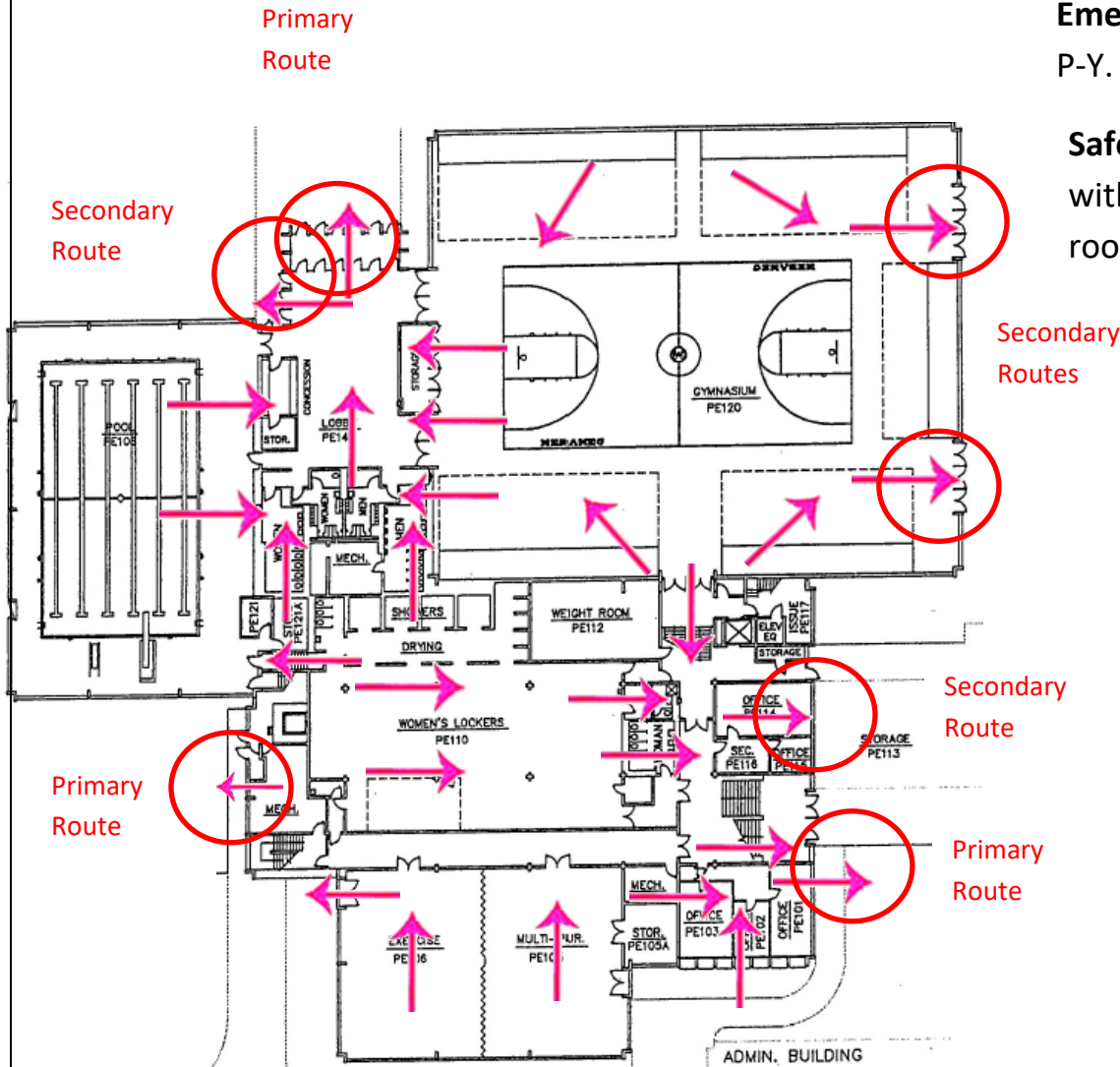
12/1/2021

# Severe Weather and Evacuation Plan-PE Floor 1

**Evacuation:** Evacuate through the nearest marked exit (Circled) using the routes (Arrows) as marked.

**Emergency Assembly Point (EAPs):** Faculty & Staff P-Y.

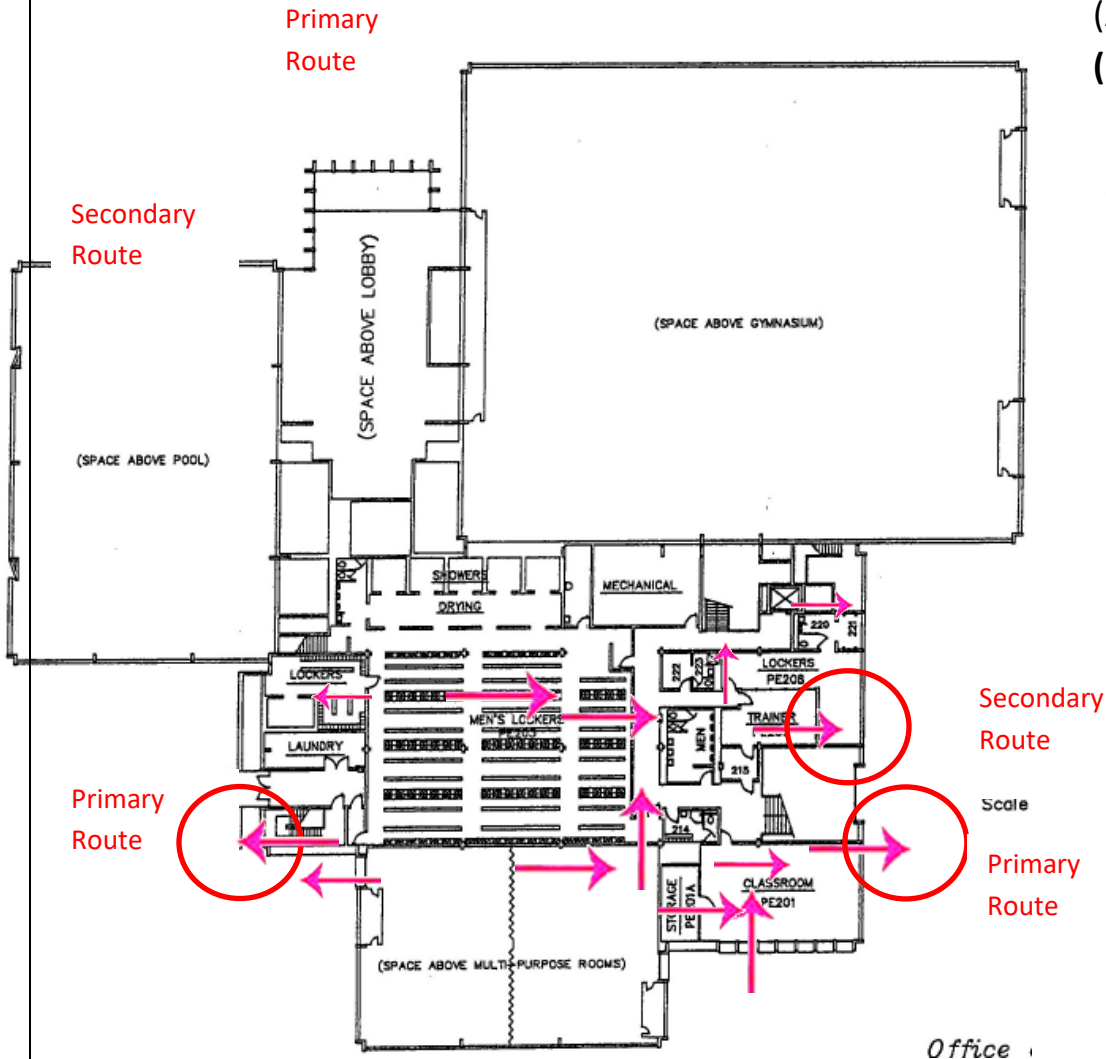
**Safe Area:** Evacuate to a restroom or room without windows (Shower rooms, office, or weight room).



# Severe Weather and Evacuation Plan-PE Floor 2

**Evacuation:** Evacuate down stairs through the nearest marked exit (Circled) using the routes (Arrows) as marked. **Emergency Assembly Point (EAPs):** Faculty & Staff P-Y.

**Safe Area:** Evacuate to a restroom or room without windows (Shower rooms, office, or weight room).

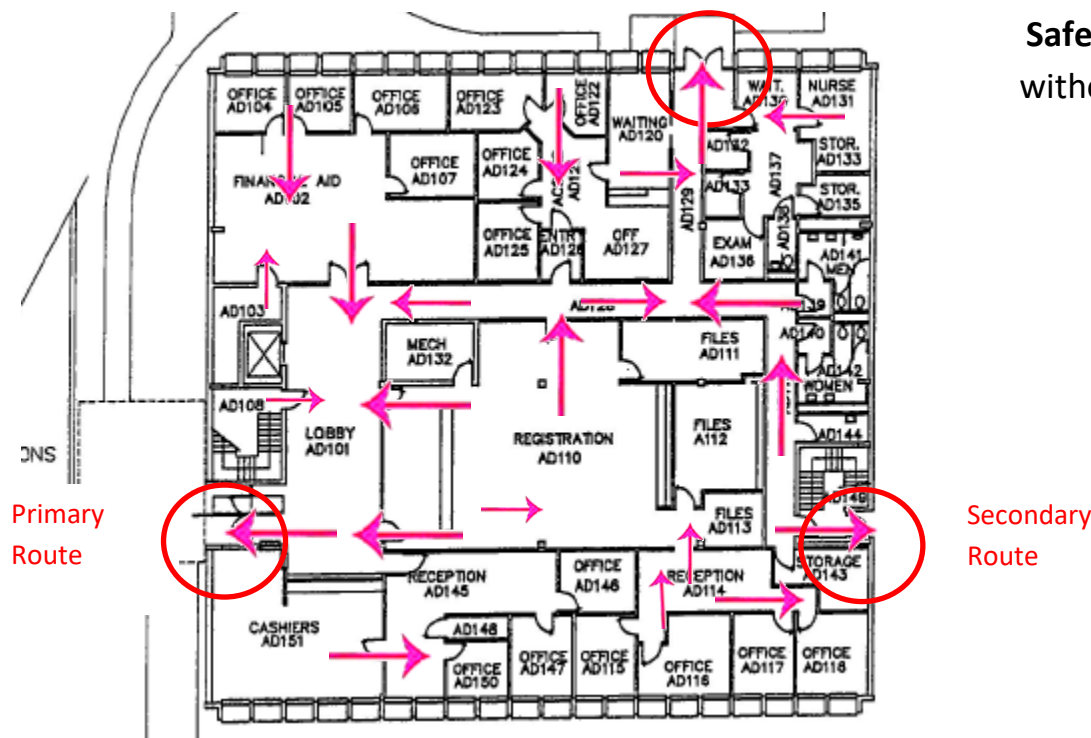


# Severe Weather and Evacuation Plan-Admin Floor 1

Primary  
Route

**Evacuation:** Evacuate through the nearest marked exit (Circled) using the routes (Arrows) as marked.  
**Emergency Assembly Point (EAPs):** Faculty & Staff P-Y.

**Safe Area:** Evacuate to a restroom or room without windows.



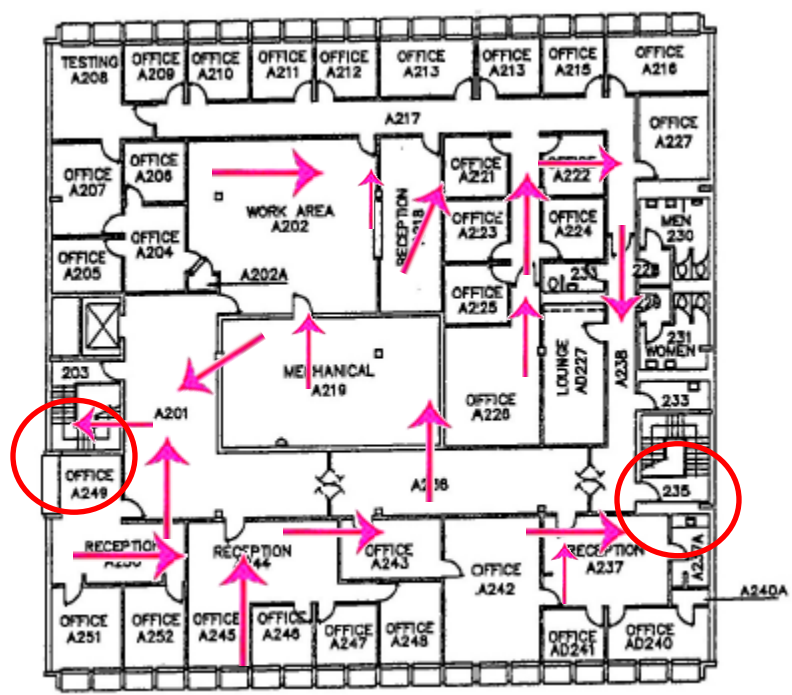
Primary  
Route

Secondary  
Route

# Severe Weather and Evacuation Plan-Admin 2nd floor

**Evacuation:** Evacuate down the stairs and through the nearest marked exit using the routes (Arrows) as marked. **Emergency Assembly Point (EAPs):** Faculty & Staff P-Y.

**Safe Area:** Evacuate to a restroom or room without windows.



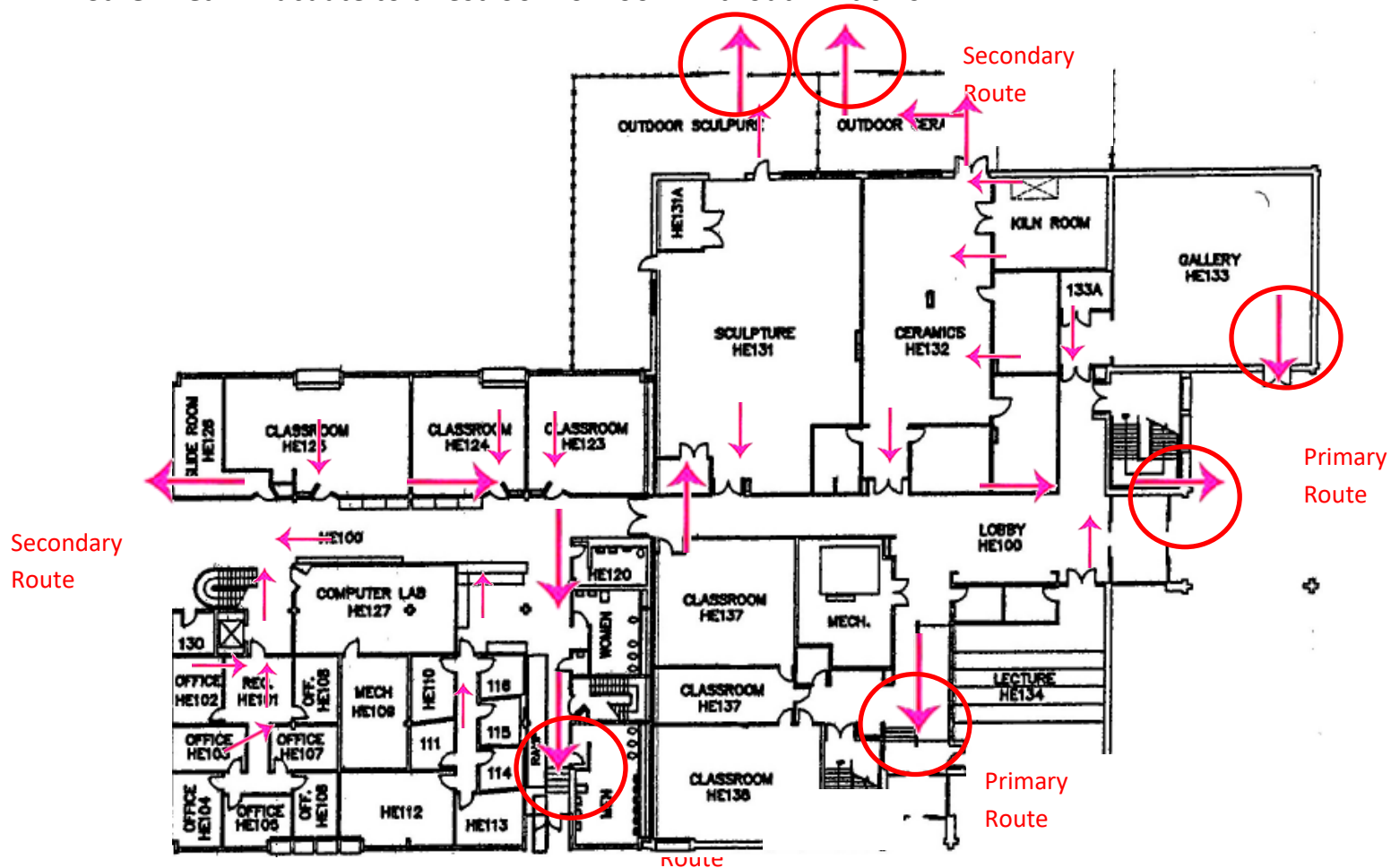
# Severe Weather and Evacuation Plan-Humanities East

## 1<sup>st</sup> Floor

**Evacuation:** Evacuate through the nearest marked exit (Circled) using the routes (Arrows) as marked.

**Emergency Assembly Point (EAPs):** Faculty & Staff P-Y.

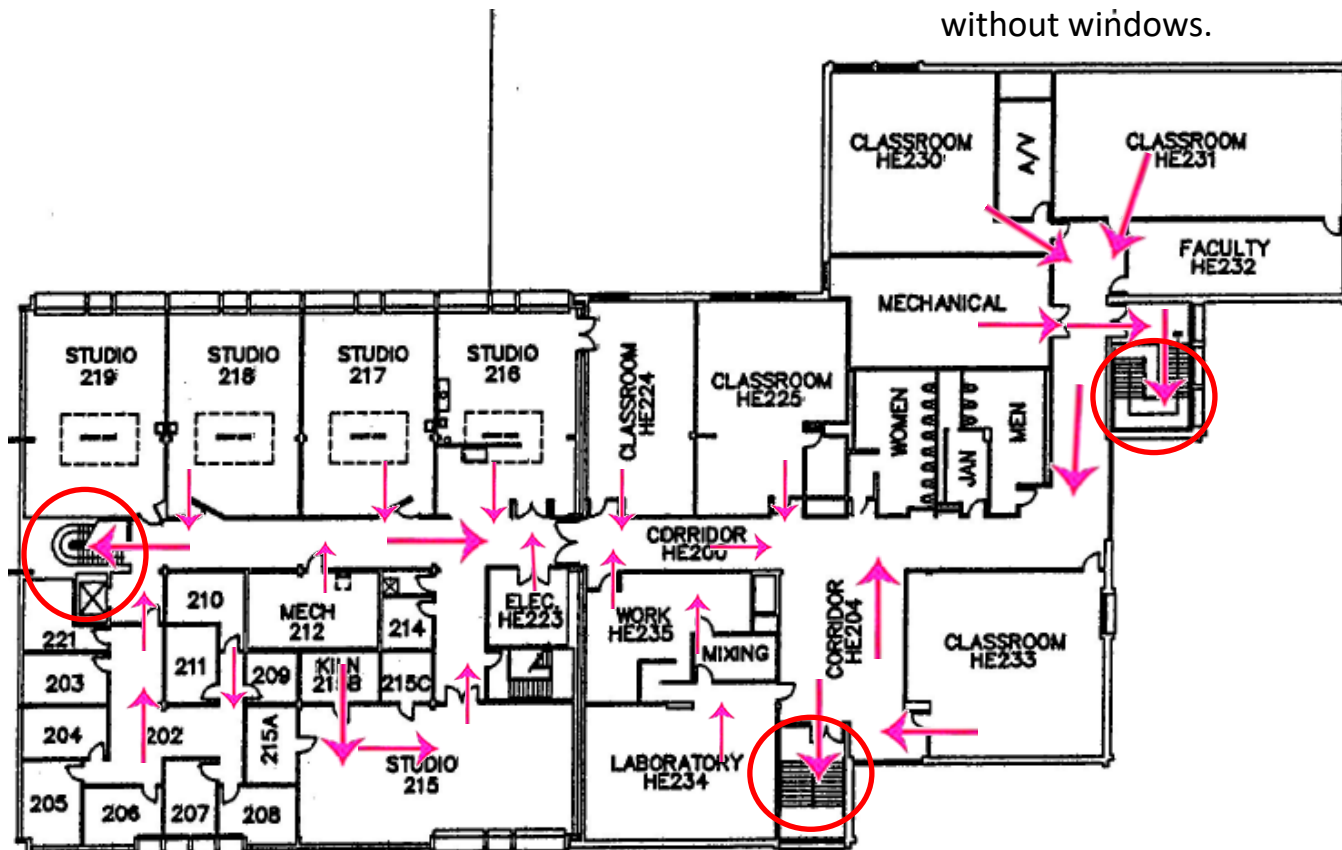
**Safe Area:** Evacuate to a restroom or room without windows.



# Severe Weather and Evacuation Plan-Humanities East 2nd Floor

**Evacuation:** Evacuate down the stairs and through the nearest marked exit using the routes (Arrows) as marked. **Emergency Assembly Point (EAPs):** Faculty & Staff P-Y.

**Safe Area:** Evacuate to a restroom or room without windows.



# Severe Weather and Evacuation Plan-Humanities West

## 1<sup>st</sup> Floor

Secondary Route

Secondary Route

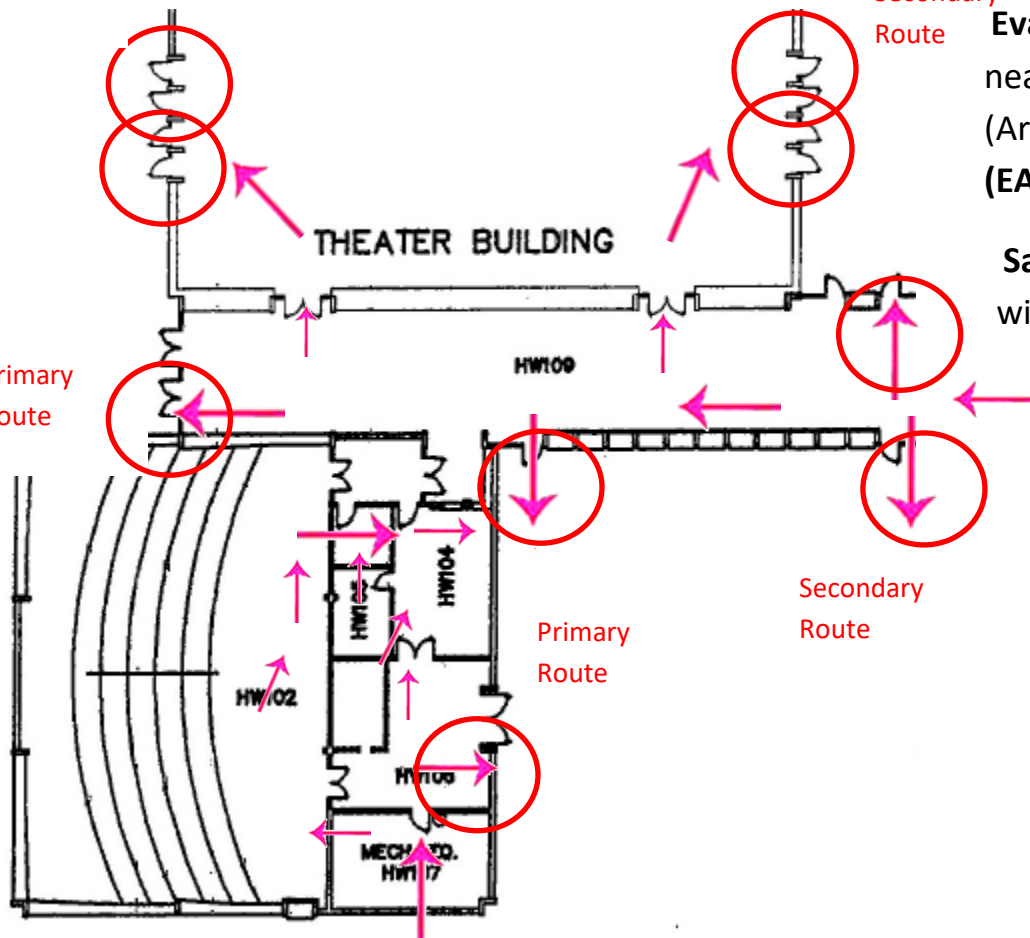
**Evacuation:** Evacuate through the nearest marked exit (Circled) using the routes (Arrows) as marked. **Emergency Assembly Point (EAPs):** Faculty & Staff P-Y.

**Safe Area:** Evacuate to a restroom or room without windows.

Primary Route

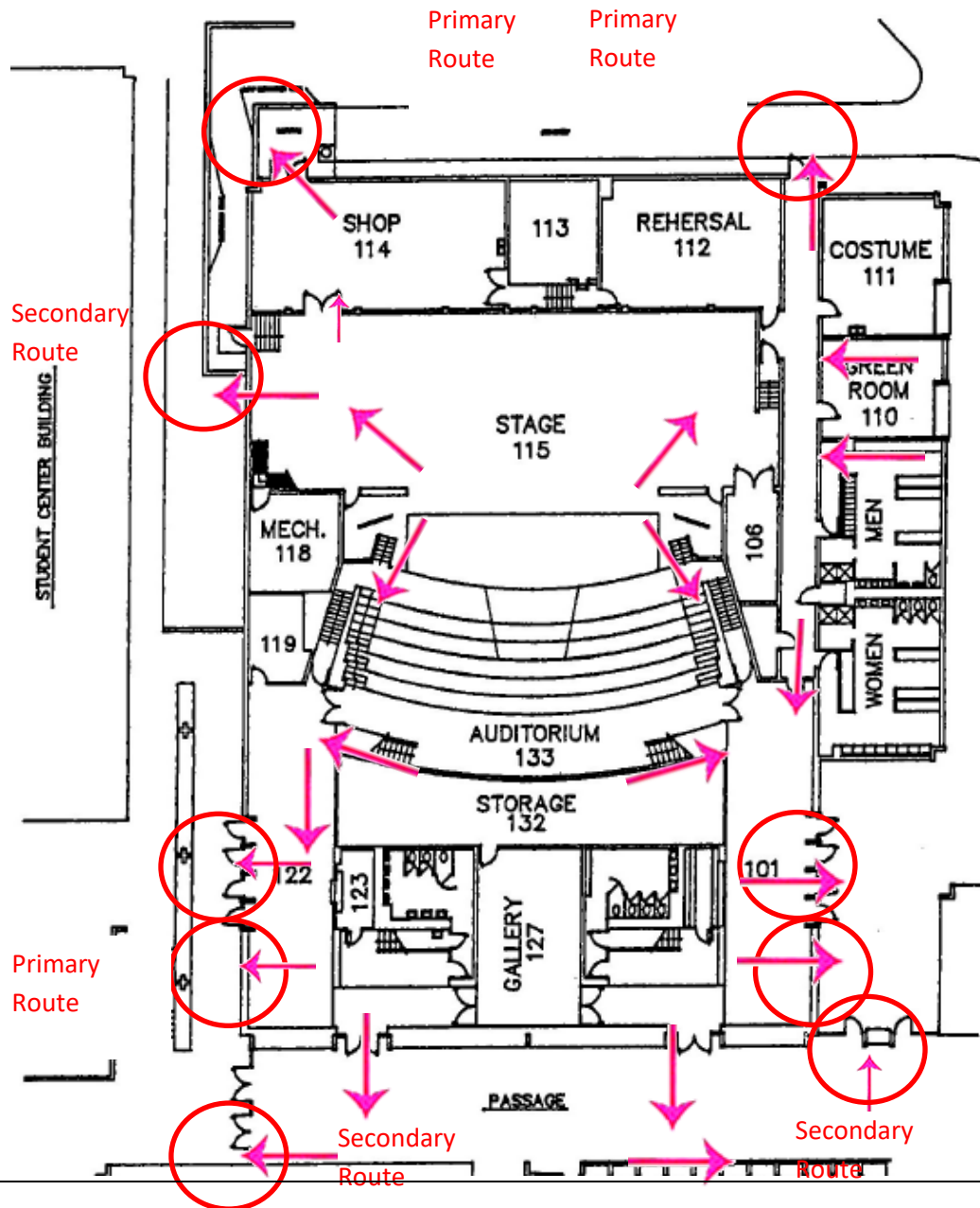
Secondary Route

Primary Route





# Severe Weather and Evacuation Plan-Theater



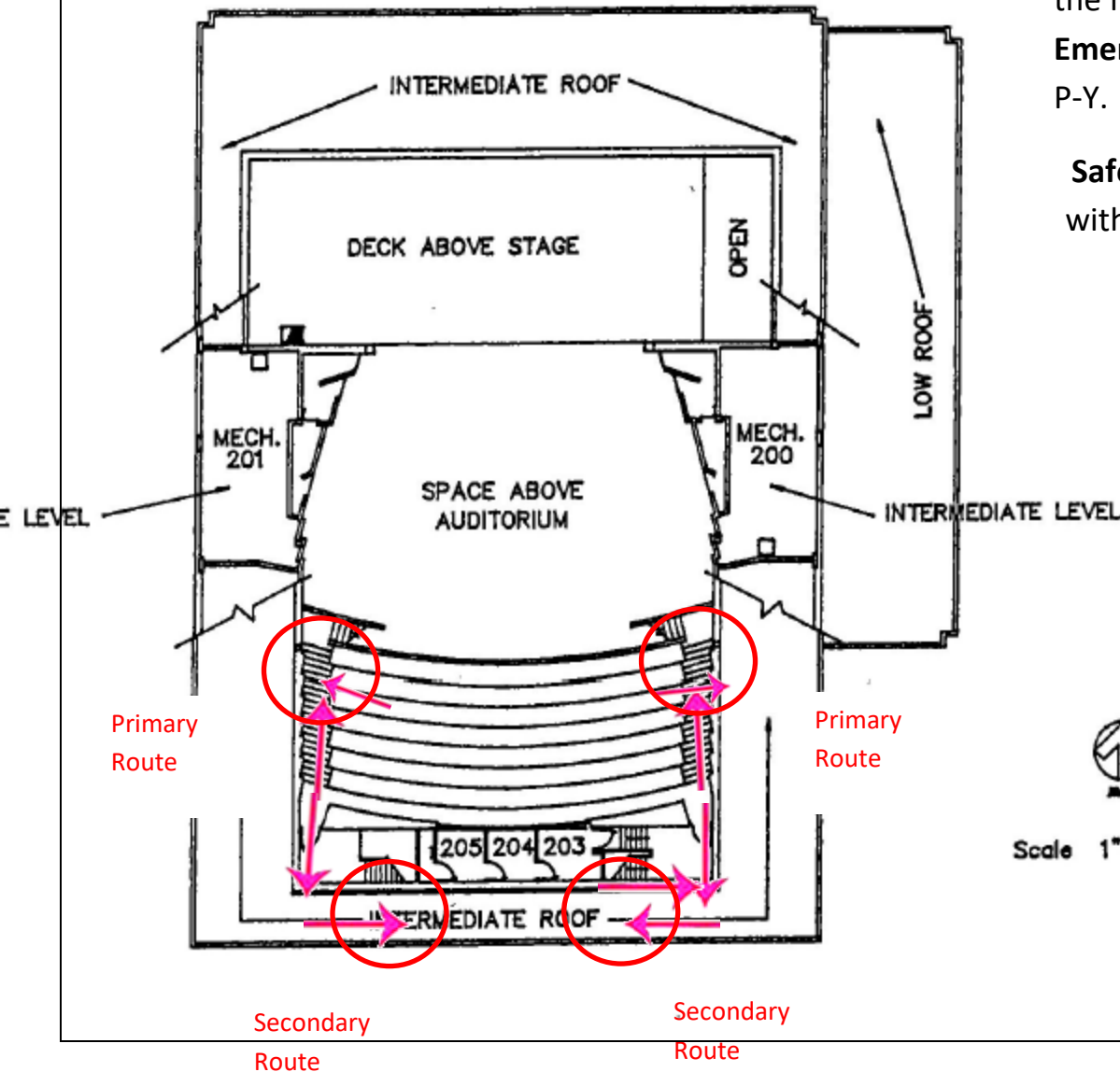
**Evacuation:** Evacuate through the nearest marked exit (Circled) using the routes (Arrows) as marked. **Emergency Assembly Point (EAPs):** Faculty & Staff P-Y.

**Safe Area:** Evacuate to a restroom or room without windows.

# Severe Weather and Evacuation Plan-Theater Balcony

**Evacuation:** Evacuate down the stairs and through the nearest marked exit (Circled) on the first floor using the routes (Arrows) as marked.  
**Emergency Assembly Point (EAPs):** Faculty & Staff P-Y.

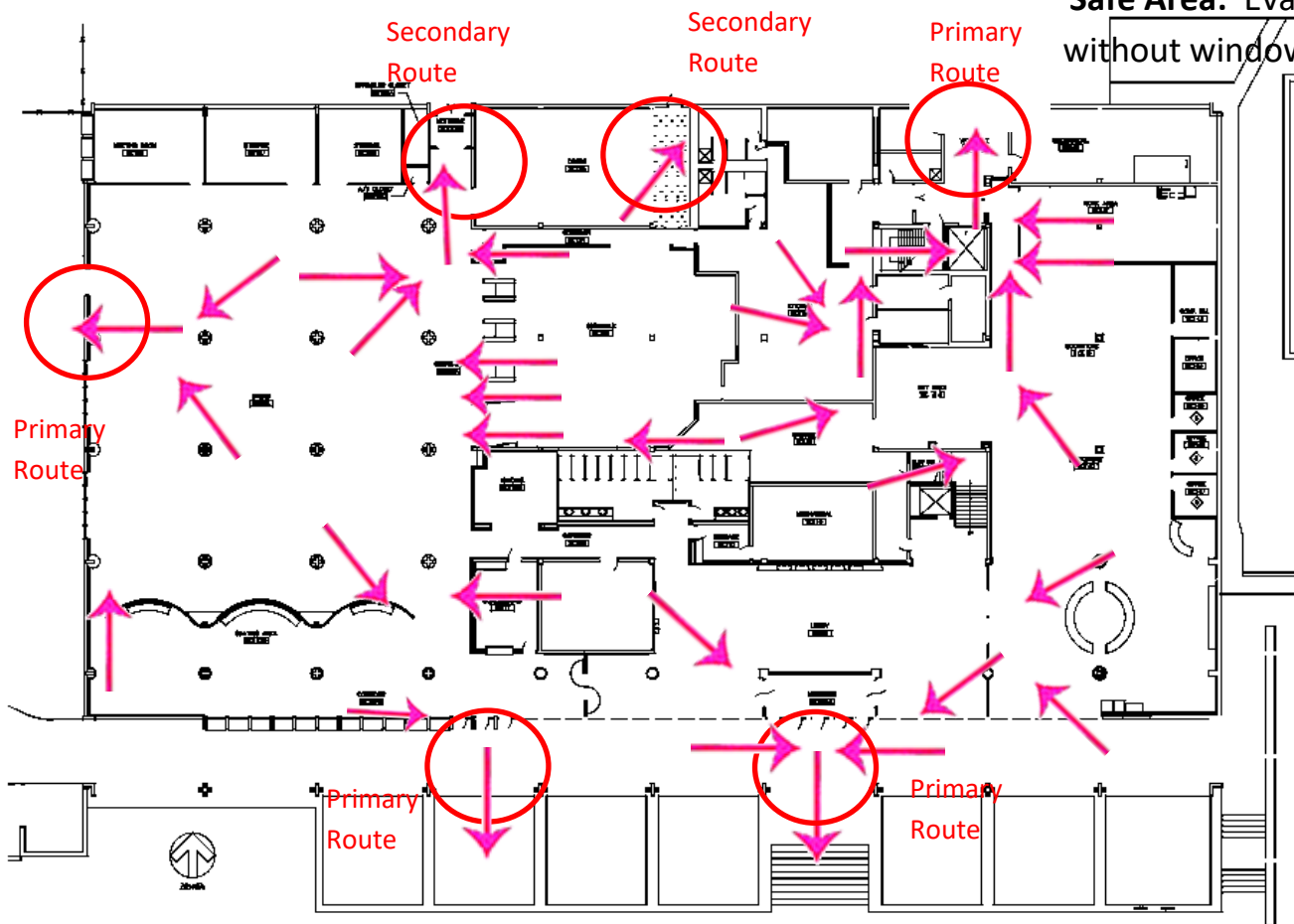
**Safe Area:** Evacuate to a restroom or room without windows.



# Severe Weather and Evacuation Plan-Student Center 1<sup>st</sup>

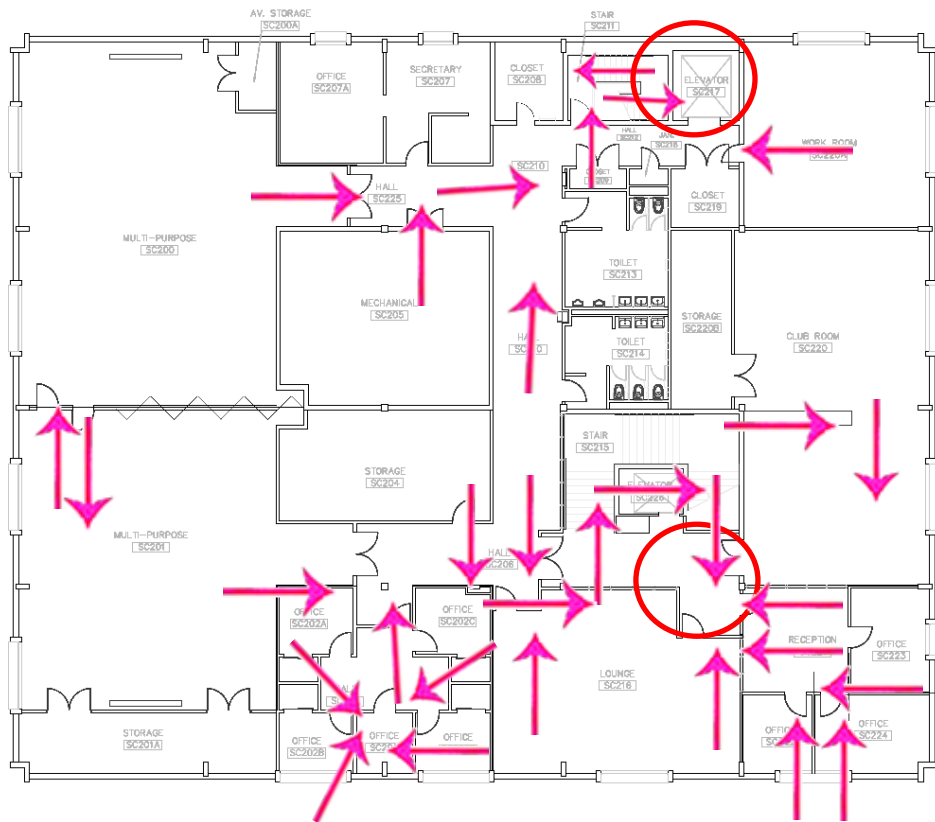
**Evacuation:** Evacuate through the nearest marked exit (Circled) using the routes (Arrows) as marked. **Emergency Assembly Point (EAPs):** Faculty & Staff P-Y.

**Safe Area:** Evacuate to a restroom or room without windows.



# Severe Weather and Evacuation Plan-Student Center

## 2<sup>nd</sup> Floor



**Evacuation:** Evacuate down the stairs and through the nearest marked exit (Circled) on the first floor using the routes (Arrows) as marked.

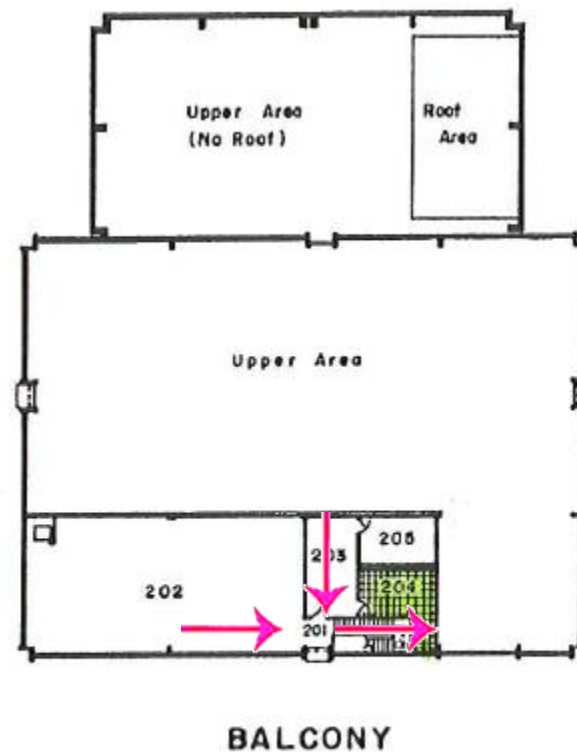
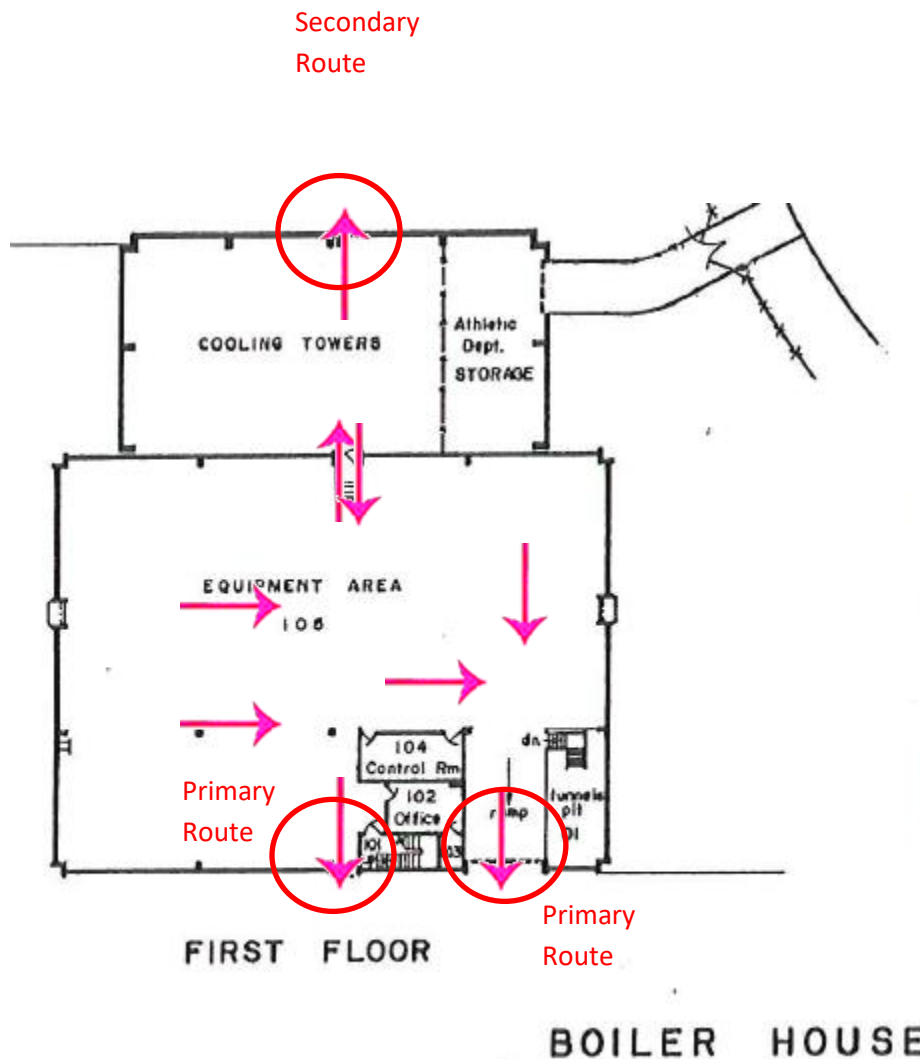
**Emergency Assembly Point (EAPs):** Faculty & Staff P-Y.

**Safe Area:** Evacuate to a restroom or room without windows.

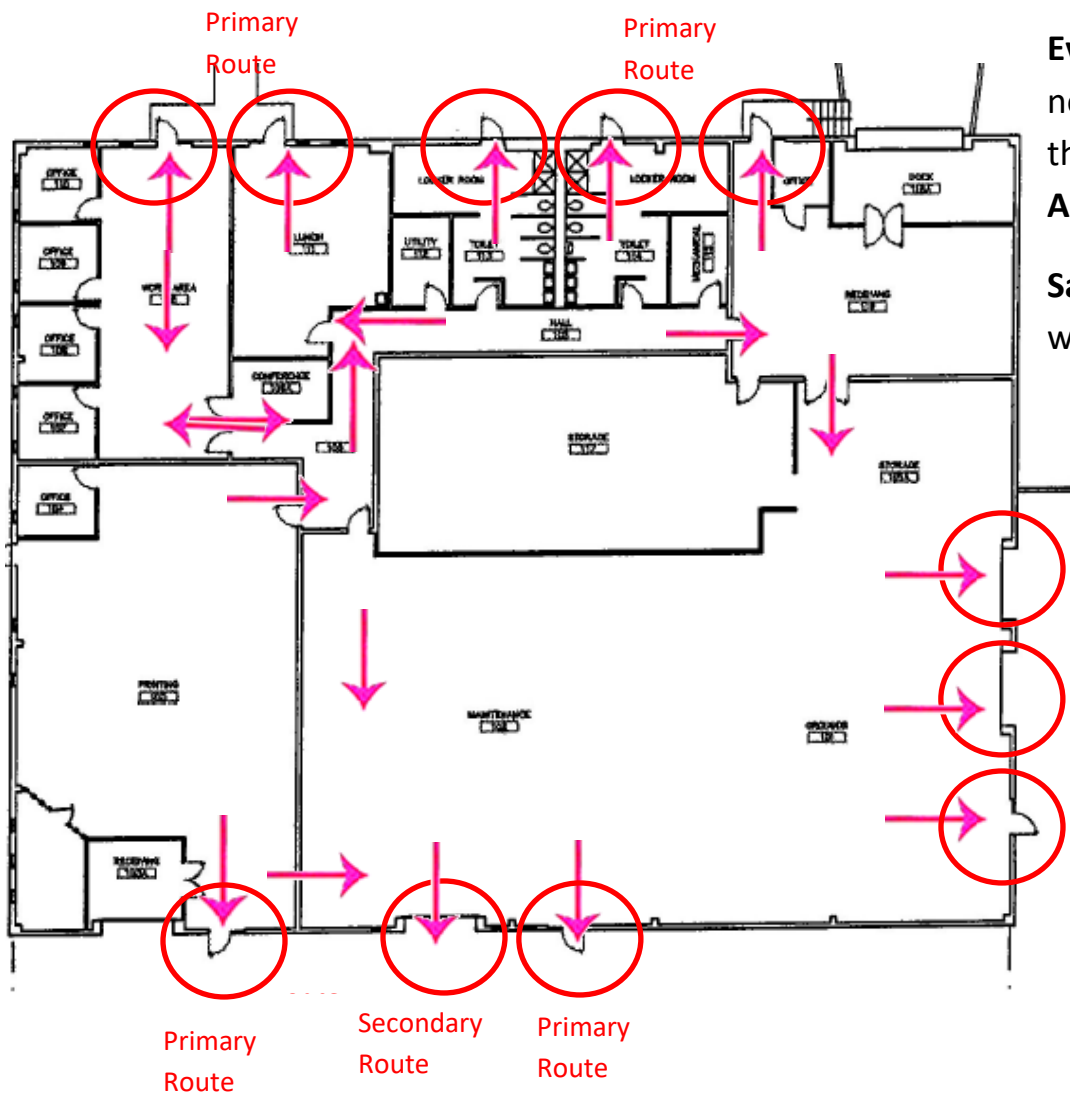
# Severe Weather and Evacuation Plan-Physical Plant

**Evacuation:** Evacuate down the stairs (2<sup>nd</sup> floor only) and through the nearest marked exit (Circled) on the first floor using the routes (Arrows) as marked. **Emergency Assembly Point (EAPs):** Faculty & Staff P-Y.

**Safe Area:** Evacuate to a restroom, stairway, or room without windows.



# Severe Weather and Evacuation Plan-Service Building



**Evacuation:** Evacuate through the nearest marked exit (Circled) on the first floor using the routes (Arrows) as marked. **Emergency Assembly Point (EAPs):** Faculty & Staff P-Y.

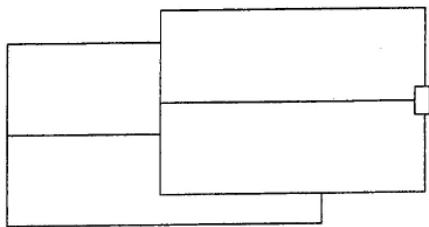
**Safe Area:** Evacuate to a restroom or room without windows.

# Severe Weather and Evacuation Plan-Police Building

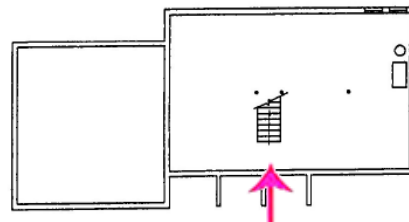
**Evacuation:** Evacuate through the nearest marked exit (Circled) on the first floor using the routes (Arrows) as marked. **Emergency Assembly Point (EAPs):** Faculty & Staff P-Y.

If in the basement ascend the stairs. If on the second floor descend the stairs.

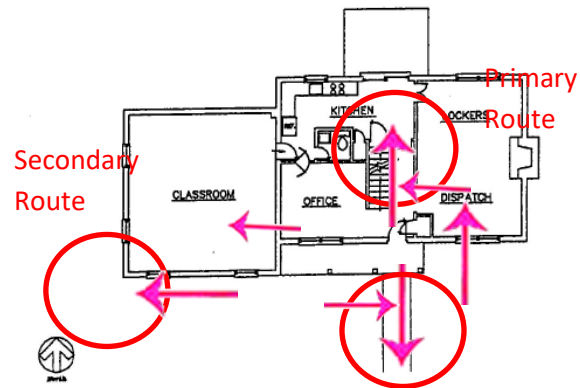
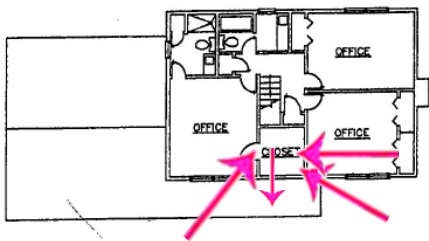
**Safe Area:** Evacuate to a restroom or room without windows.



ROOF PLAN



BASEMENT PLAN

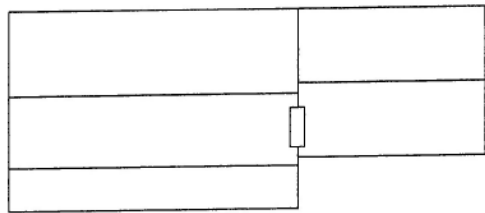


Primary Route

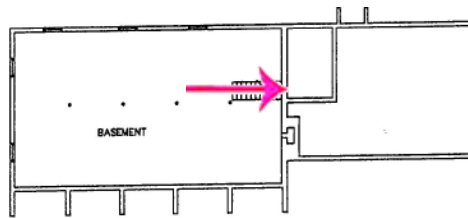
Secondary Route

Primary Route

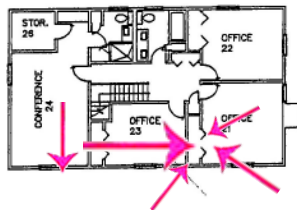
# Severe Weather and Evacuation Plan-Continuing Education



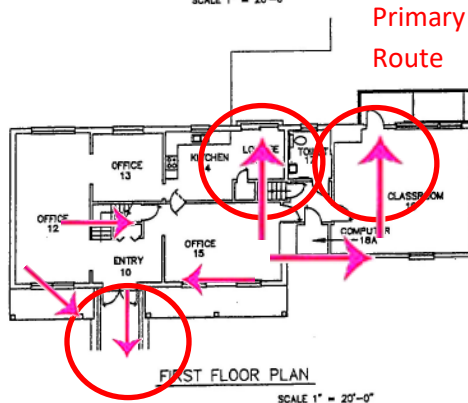
ROOF PLAN  
SCALE 1" = 20'-0"



BASEMENT PLAN  
SCALE 1" = 20'-0"



SECOND FLOOR PLAN  
SCALE 1" = 20'-0"



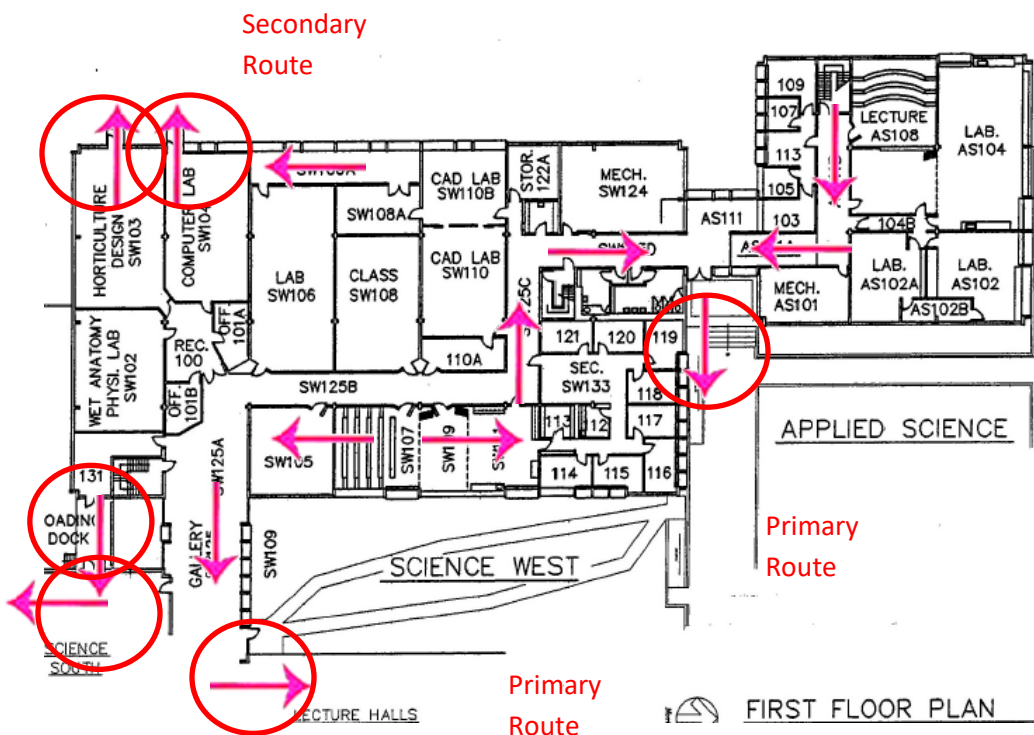
Primary  
Route

**Evacuation:** Evacuate through the nearest marked exit (Circled) on the first floor using the routes (Arrows) as marked. **Emergency Assembly Point (EAPs):** Parking I. If in the basement ascend the stairs. If on the second floor descend the stairs.

**Safe Area:** Evacuate to a restroom or room without windows.



# Severe Weather and Evacuation Plan-Applied Science and Science West 1<sup>st</sup> Floor



**Evacuation:** Evacuate through the nearest marked exit (Circled) on the first floor using the routes (Arrows) as marked. **Emergency Assembly Point (EAPs):** Parking I. If in the basement ascend the stairs. If on the second floor descend the stairs.

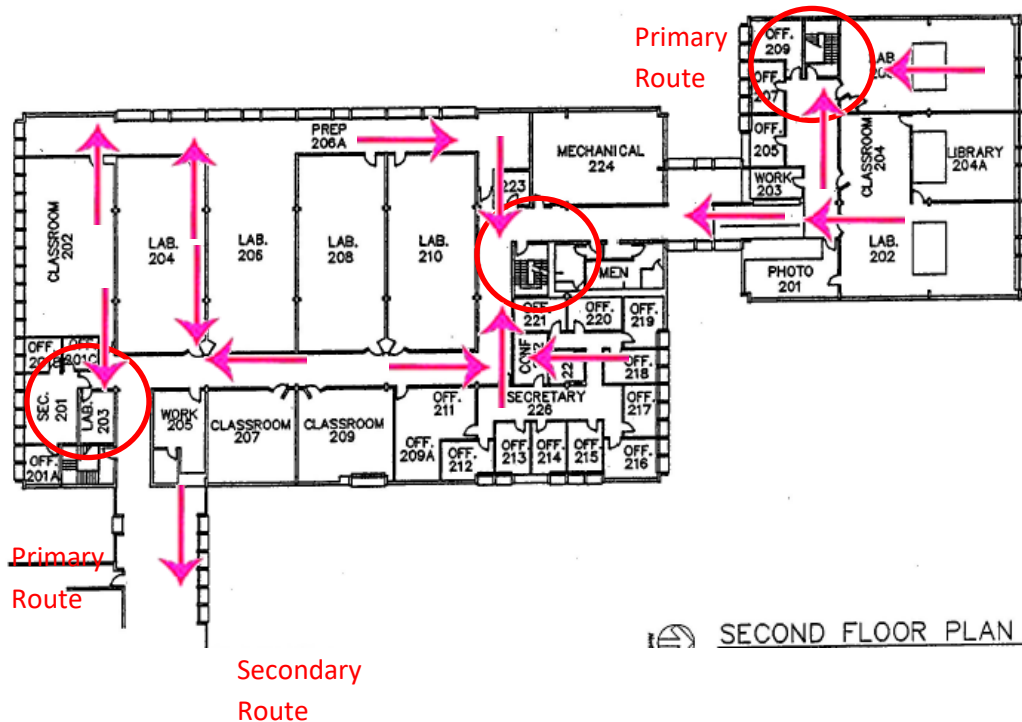
**Safe Area:** Evacuate to a restroom or room without windows.

Secondary  
Route

Primary  
Route

Primary  
Route

# Severe Weather and Evacuation Plan-Applied Science and Science West 2<sup>nd</sup> Floor

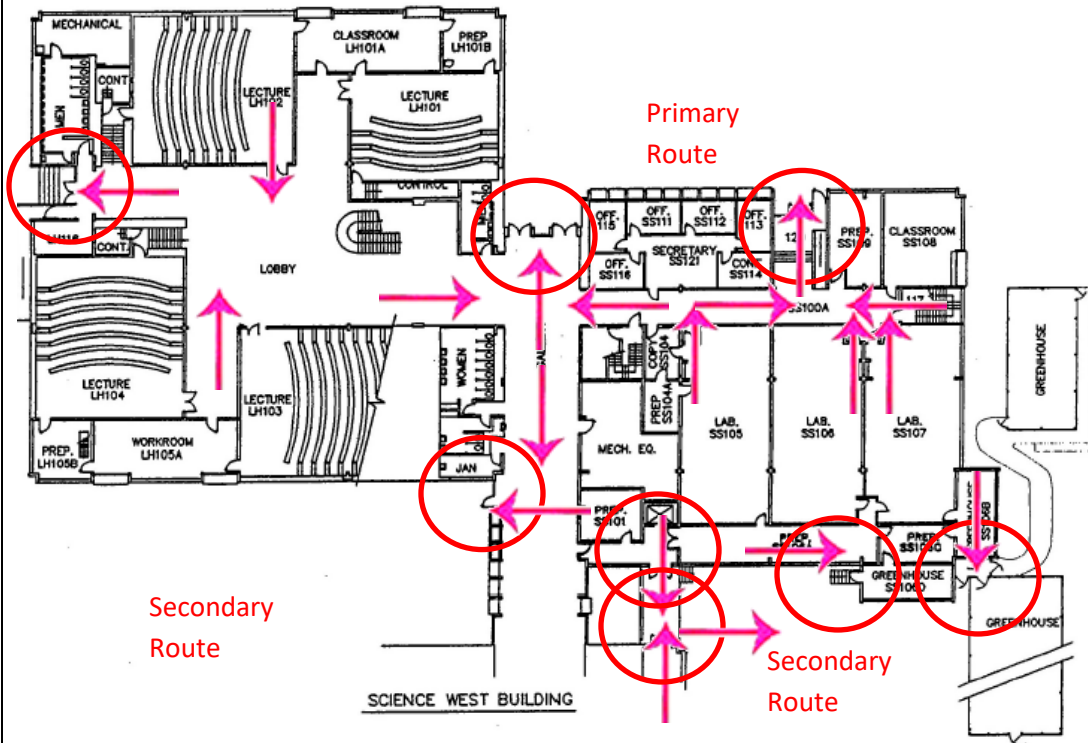


**Evacuation:** Evacuate through the nearest marked exit (Circled) on the first floor using the routes (Arrows) as marked. **Emergency Assembly Point (EAPs):** Parking I. If on the second floor descend the stairs.

**Safe Area:** Evacuate to a restroom or room without windows.

# Severe Weather and Evacuation Plan-Science South and Lecture Halls 1<sup>st</sup> Floor

Primary Route



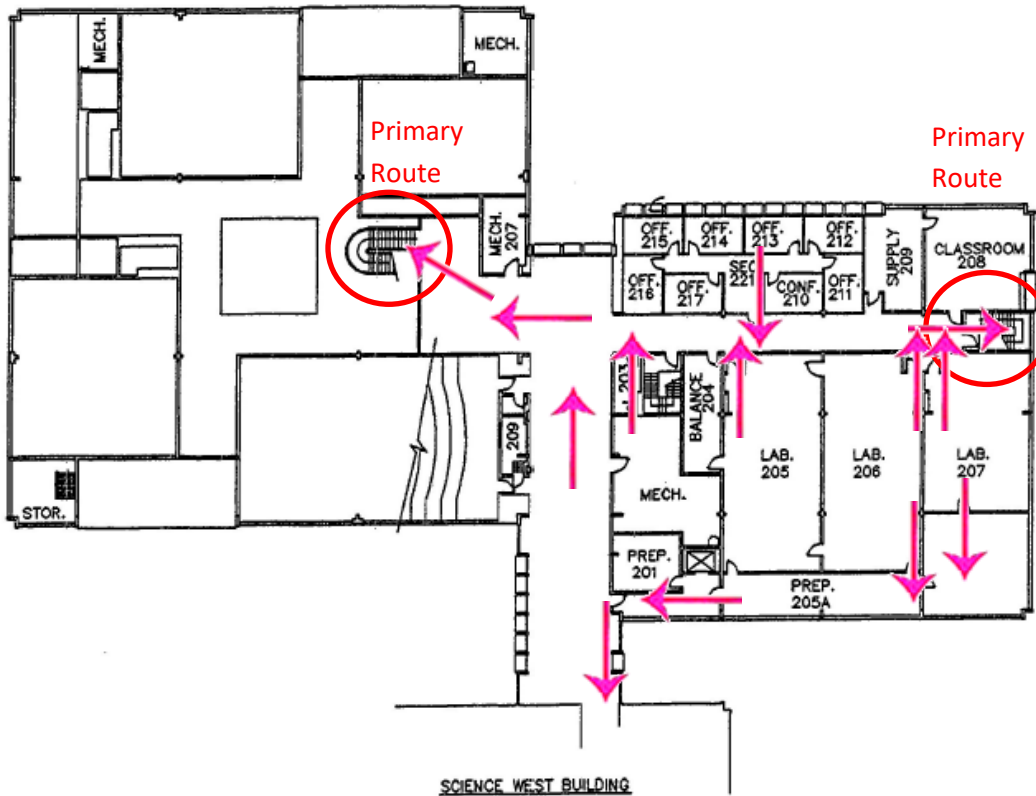
Secondary Route

FIRST FLOOR PLAN

**Evacuation:** Evacuate through the nearest marked exit (Circled) on the first floor using the routes (Arrows) as marked. **Emergency Assembly Point (EAPs):** Parking I. If on the second floor descend the stairs.

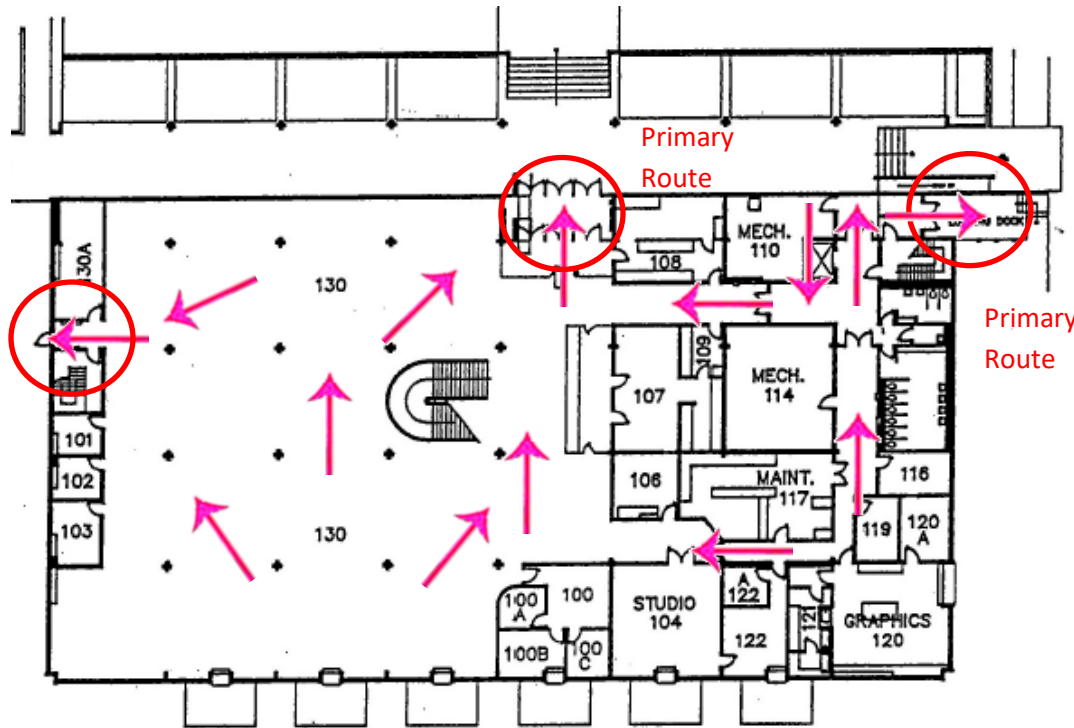
**Safe Area:** Evacuate to a restroom or room without windows.

# Severe Weather and Evacuation Plan-Science South and Lecture Halls 2<sup>nd</sup> Floor



**Evacuation:** Evacuate through the nearest marked exit (Circled) on the first floor using the routes (Arrows) as marked. **Emergency Assembly Point (EAPs):** Parking I. If on the second floor descend the stairs. **Safe Area:** Evacuate to a restroom or room without windows.

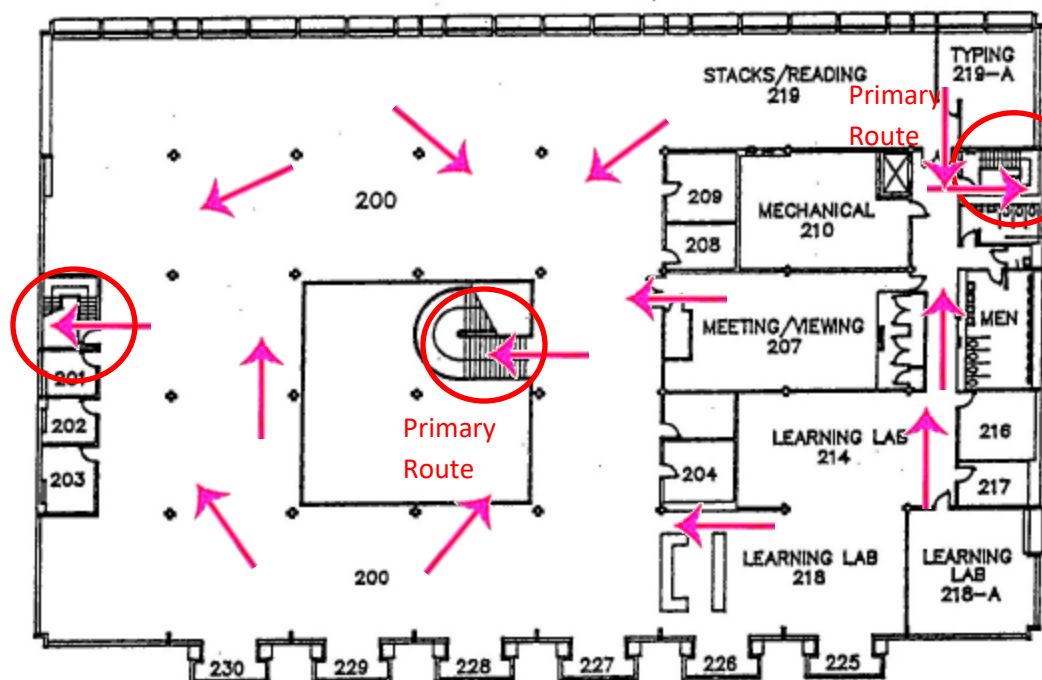
# Severe Weather and Evacuation Plan-IRC (Library) 1<sup>st</sup>



**Evacuation:** Evacuate through the nearest marked exit (Circled) on the first floor using the routes (Arrows) as marked. **Emergency Assembly Point (EAPs):** Visitor Parking. If on the second floor descend the stairs.

**Safe Area:** Evacuate to a restroom or room without windows.

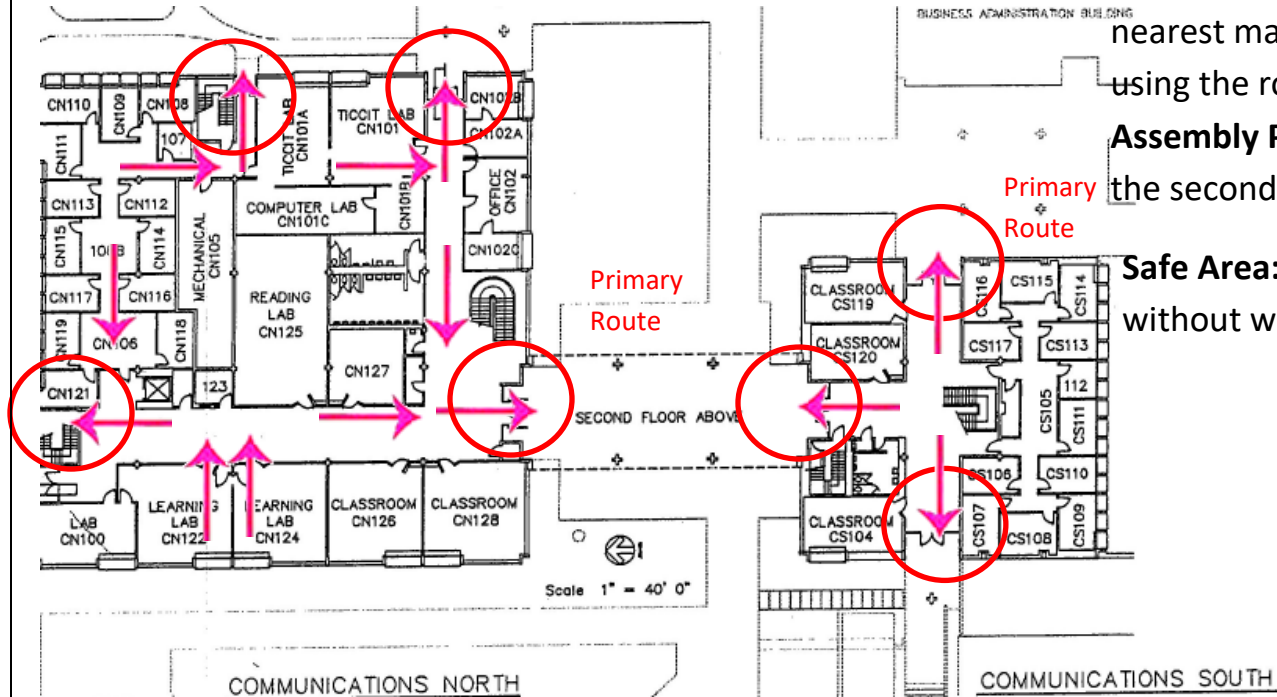
# Severe Weather and Evacuation Plan-IRC (Library) 2<sup>nd</sup>



**Evacuation:** Evacuate through the nearest marked exit (Circled) on the first floor using the routes (Arrows) as marked. **Emergency Assembly Point (EAPs):** Visitor Parking. If on the second floor descend the stairs.

**Safe Area:** Evacuate to a restroom or room without windows.

# Severe Weather and Evacuation Plan-Communications



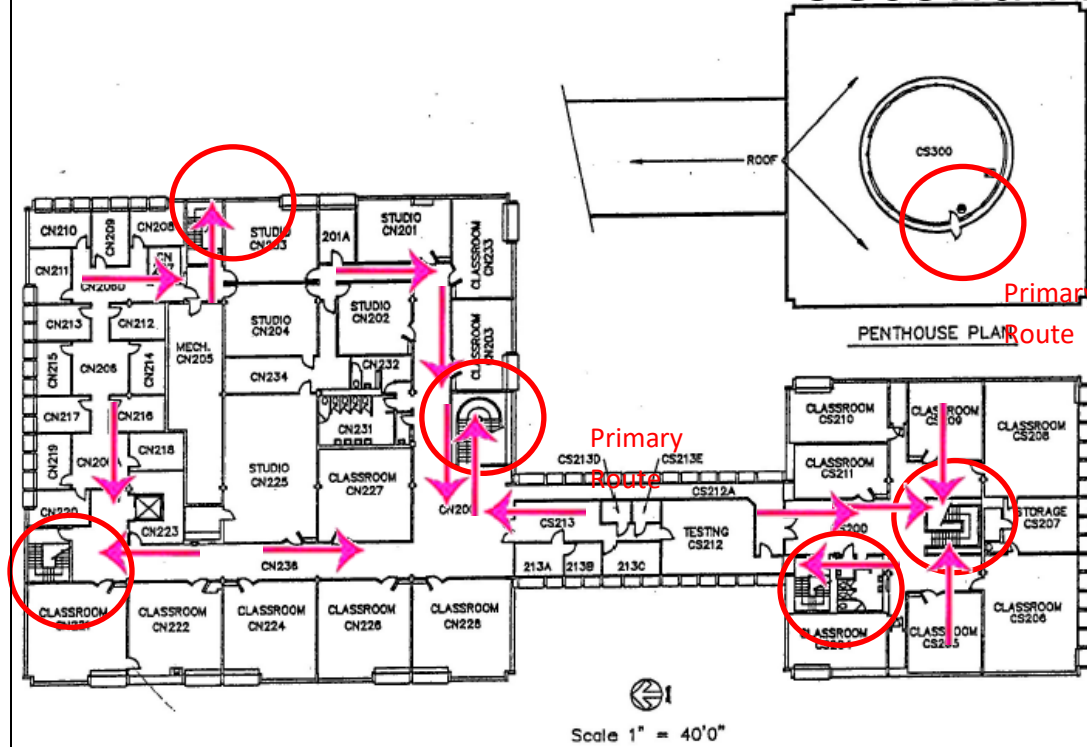
**Evacuation:** Evacuate through the nearest marked exit (Circled) on the first floor using the routes (Arrows) as marked. **Emergency**

**Assembly Point (EAPs):** Visitor Parking. If on the second floor descend the stairs.

**Safe Area:** Evacuate to a restroom or room without windows.

# Severe Weather and Evacuation Plan-Communications

## Second Floor



NORTH COMMUNICATIONS

SOUTH COMMUNICATIONS

**Evacuation:** Evacuate down the stairs (Circled) to the first floor using the routes (Arrows) as marked. **Emergency Assembly Point (EAPs):** Visitor Parking. If in the penthouse evacuate down the ladder then follow the routes to the first floor.

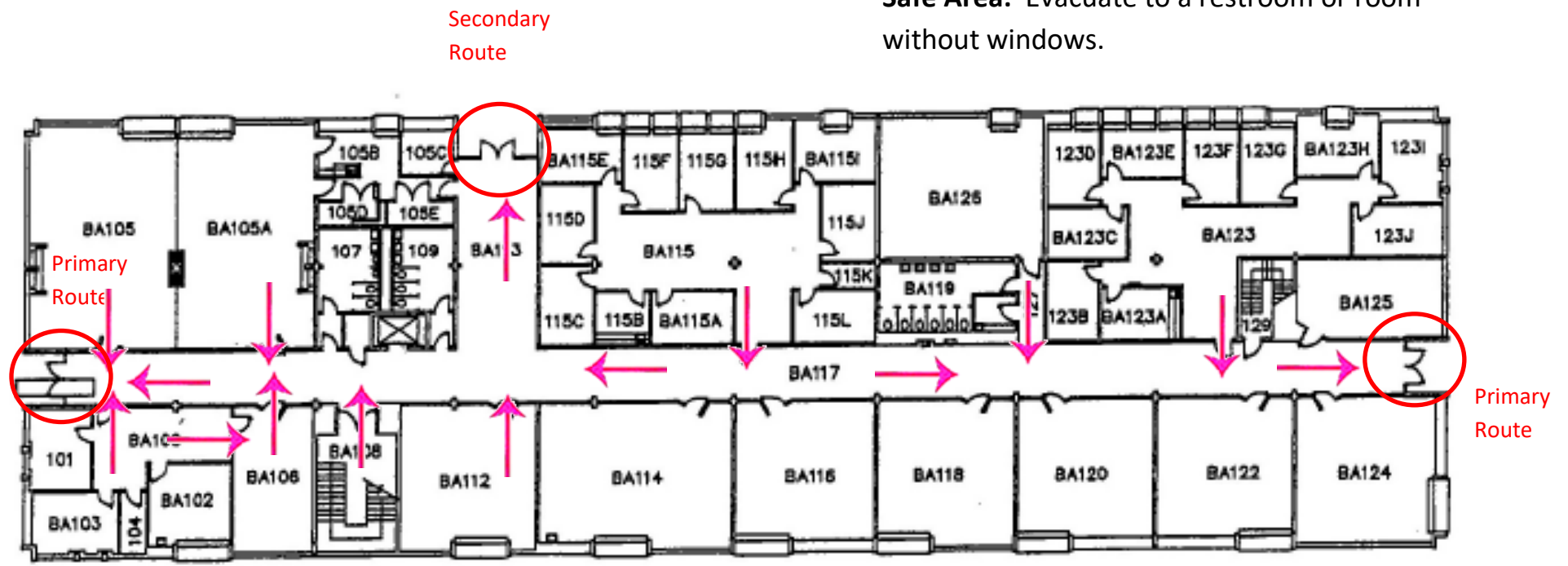
**Safe Area:** Evacuate to a restroom or room without windows.



# Severe Weather and Evacuation Plan-BA 1<sup>st</sup> Floor

**Evacuation:** Evacuation: Evacuate down the stairs (Circled) to the first floor using the routes (Arrows) as marked. **Emergency Assembly Point (EAPs):** Visitor Parking. If in the penthouse evacuate down the ladder then follow the routes to the first floor.

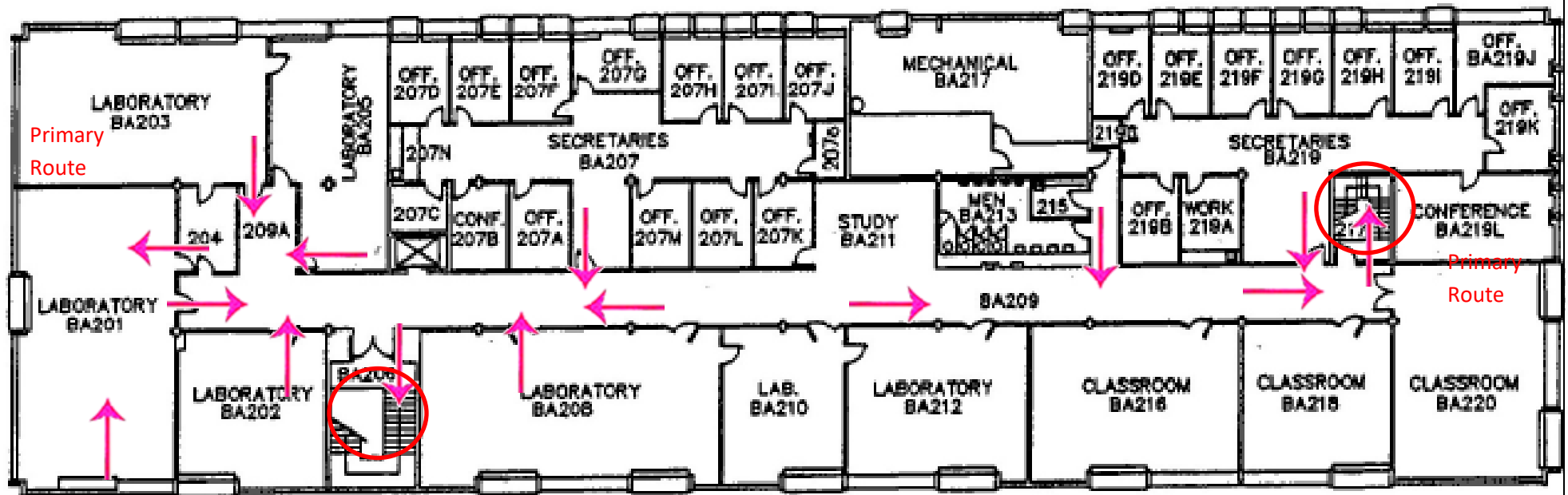
**Safe Area:** Evacuate to a restroom or room without windows.



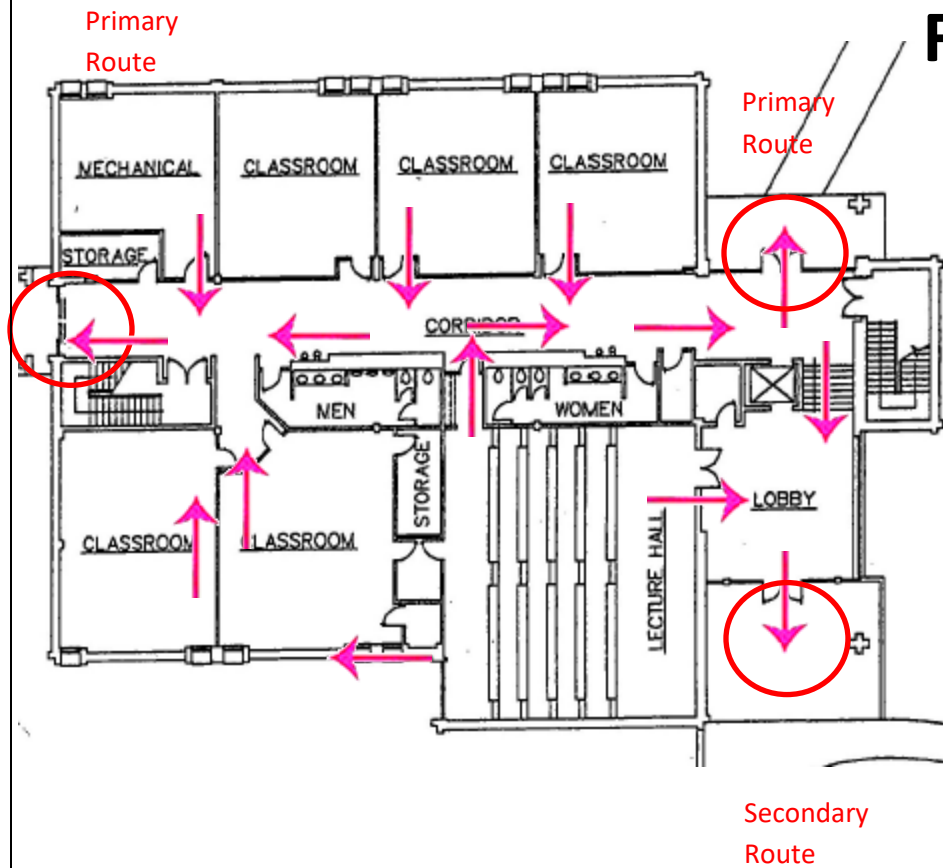
# Severe Weather and Evacuation Plan-BA 2<sup>nd</sup> Floor

**Evacuation:** Evacuation: Evacuate down the stairs (Circled) using the routes (Arrows) as marked. **Emergency Assembly Point (EAPs):** Visitor Parking. If in the penthouse evacuate down the ladder then follow the routes to the first floor.

**Safe Area:** Evacuate to a restroom or room without windows.



# Severe Weather and Evacuation Plan-Social Sciences 1<sup>st</sup>



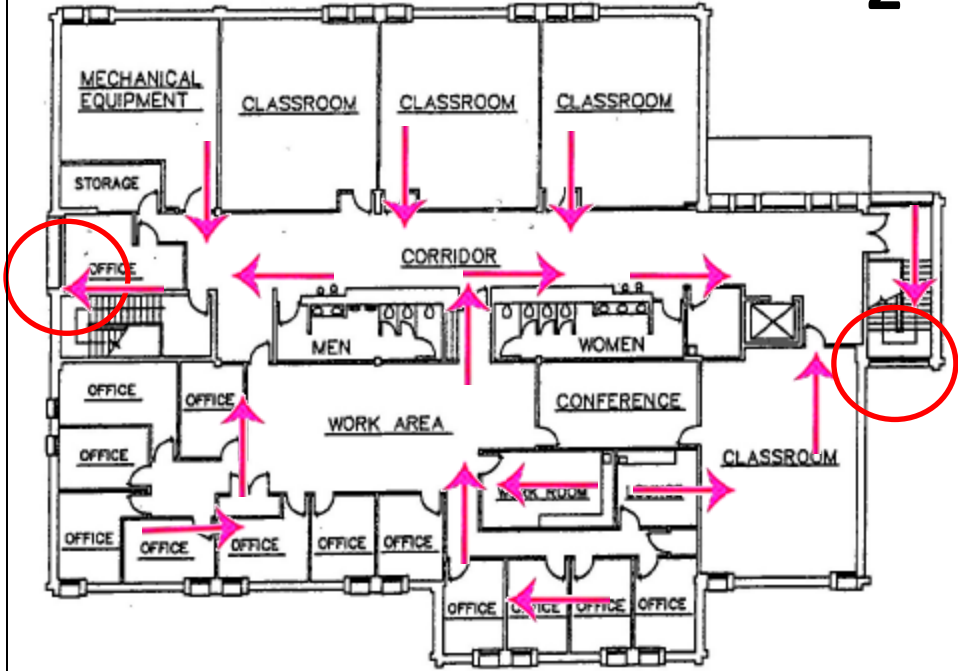
## Floor

**Evacuation:** Evacuate through the doors (Circled) using the routes (Arrows) as marked. **Emergency Assembly Point (EAPs):** Visitor Parking.

**Safe Area:** Evacuate to a restroom or room without windows.

# Severe Weather and Evacuation Plan-Social Sciences

## 2<sup>nd</sup> Floor



**Evacuation:** Evacuate down the stairs (Circled) using the routes (Arrows) as marked. **Emergency Assembly Point (EAPs):** Visitor Parking.

**Safe Area:** Evacuate to a restroom or room without windows.