



Emergency Evacuation Procedure

for:

Saint Louis Community College
Wildwood

2645 Generations Drive, Wildwood, MO 63040-1168

Evacuation Procedure Contact(s):

President: Carol Lupardus
636-422-2250

Sr. Facility Manager: Dennis Dill
314-984-7740

Police Lt.: Adis Becirovic
314-984-7808

Police Lt: Bill Ozmec
314-984-7445

EHS Specialist:

Revised Date:

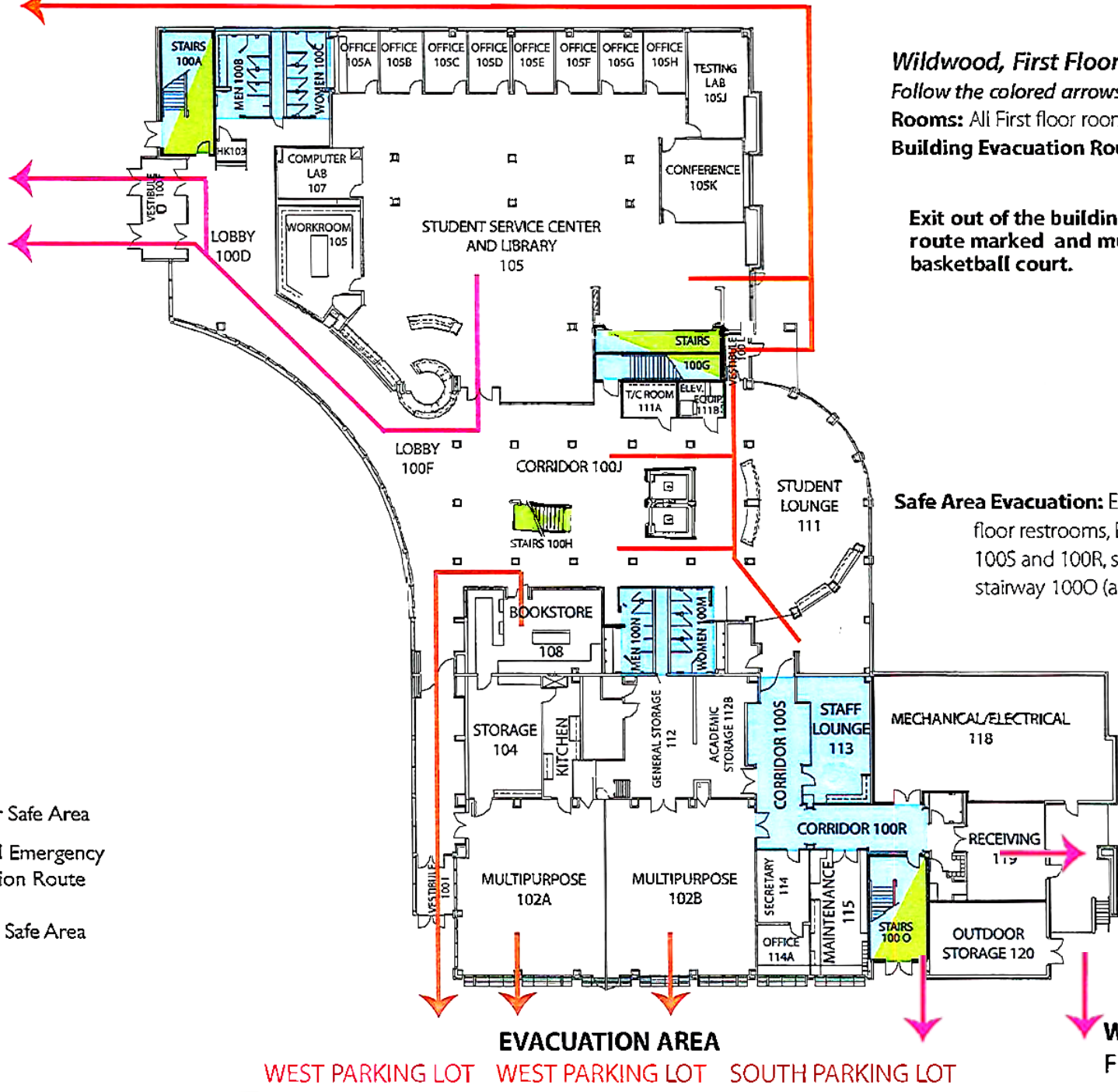
12/1/2021

Evacuation: Evacuate through the nearest marked exit using the route (Arrows) as marked.

Emergency Assembly Point (EAPs): West and South Parking lot.

Safe Area: Evacuate to a restroom or room without windows (Shower rooms).





Severe Weather Safe Area and Evacuation Plan



Wildwood, First Floor:
 Follow the colored arrows, as indicated.
Rooms: All First floor rooms/classrooms
Building Evacuation Route:

Exit out of the building using the route marked and muster at the basketball court.

Safe Area Evacuation: East and West wing first floor restrooms, East Wing corridors 100S and 100R, second floor landing stairway 100O (above ground level).

-  Stairway
-  Stairway and Severe Weather Safe Area
-  Fire and Emergency Evacuation Route
-  Severe Weather Safe Area

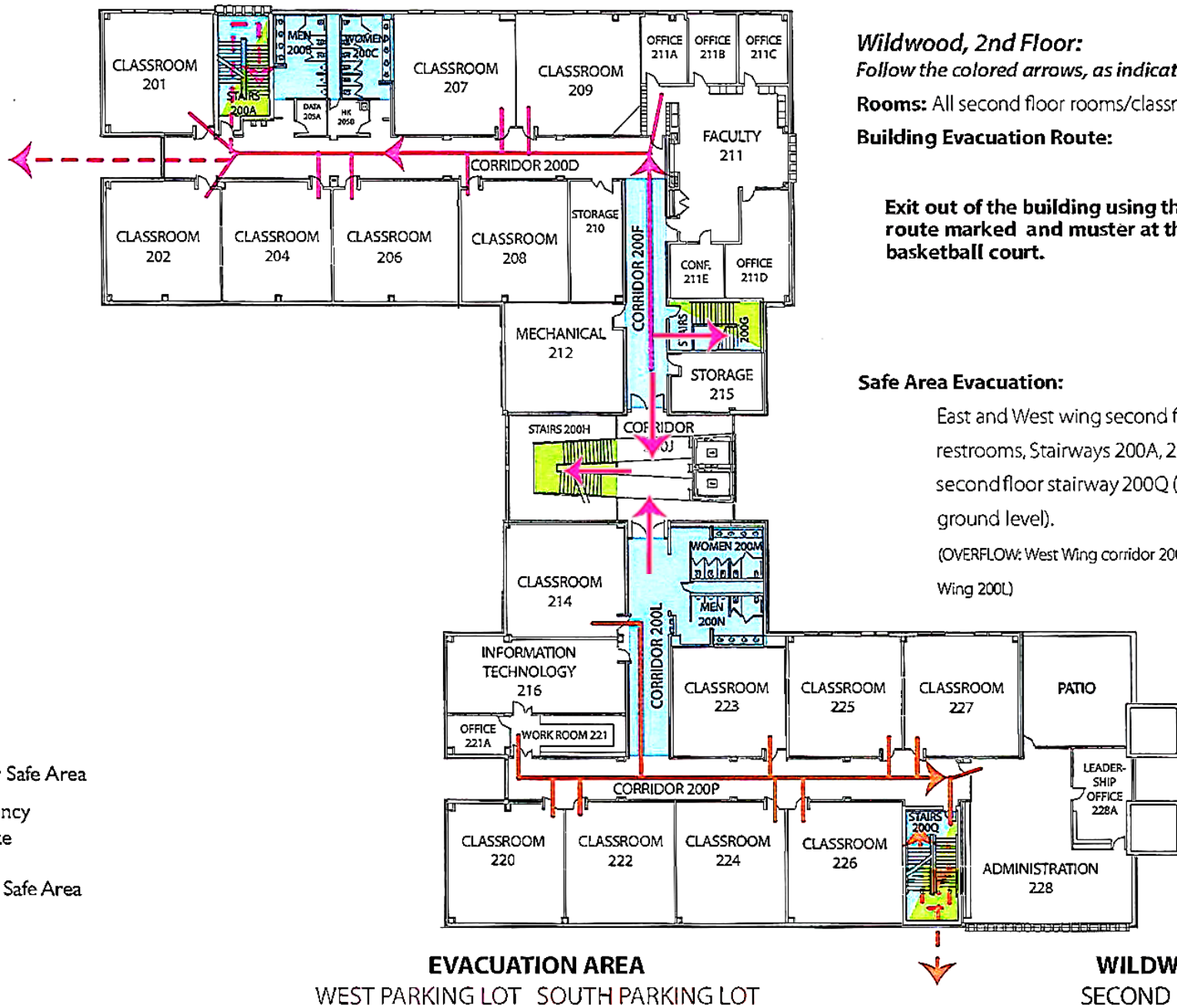


EVACUATION AREA

WEST PARKING LOT WEST PARKING LOT SOUTH PARKING LOT

WILDWOOD FIRST FLOOR

Severe Weather Safe Area and Evacuation Plan



Severe Weather Safe Area and Evacuation Plan

