



Emergency Evacuation Procedure Maps

for:

Saint Louis Community College
Florissant Valley

3400 Pershall Road Ferguson, MO 63135

Evacuation Procedure Maps Contact(s):

President: Elizabeth Perkins
314-513-4537

Facility Manager: Aaron Eckhard
314-513-4362

Sr. Facility Manager: Dennis Dill
314-984-7740

Police Lt.: Adis Becirovic
314-984-7808

Police Lt.: Terri Buford
314-513-4297

EHS Specialist:

Revised Date:

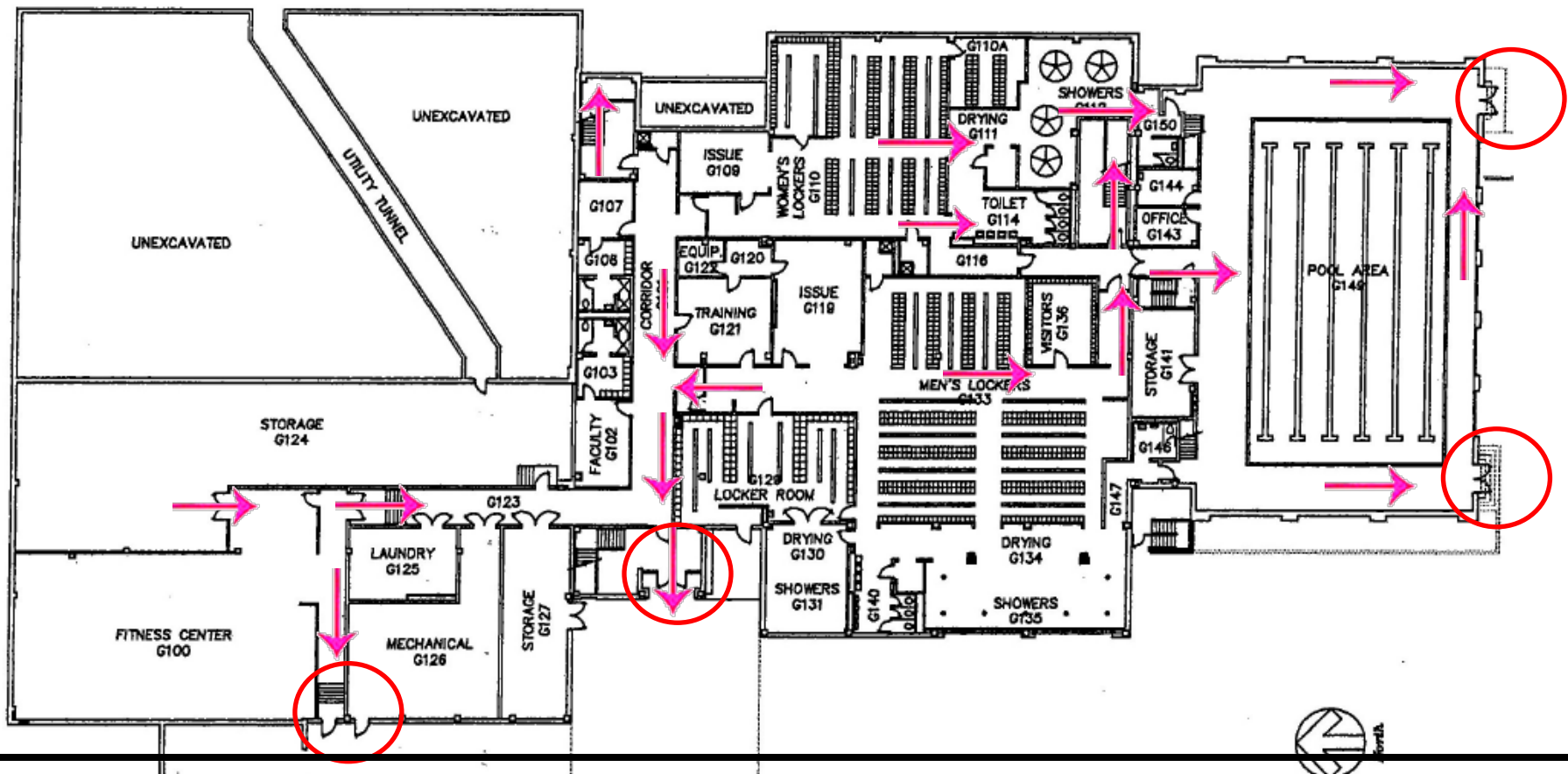
12/1/2021

Severe Weather and Evacuation Plan-PE Floor 1

Evacuation: Evacuate through the nearest marked exit (Circled) using the route (Arrows) as marked.

Emergency Assembly Point (EAPs): P-6 & P-9 lot.

Safe Area: Evacuate to a restroom or room without windows (Shower rooms).

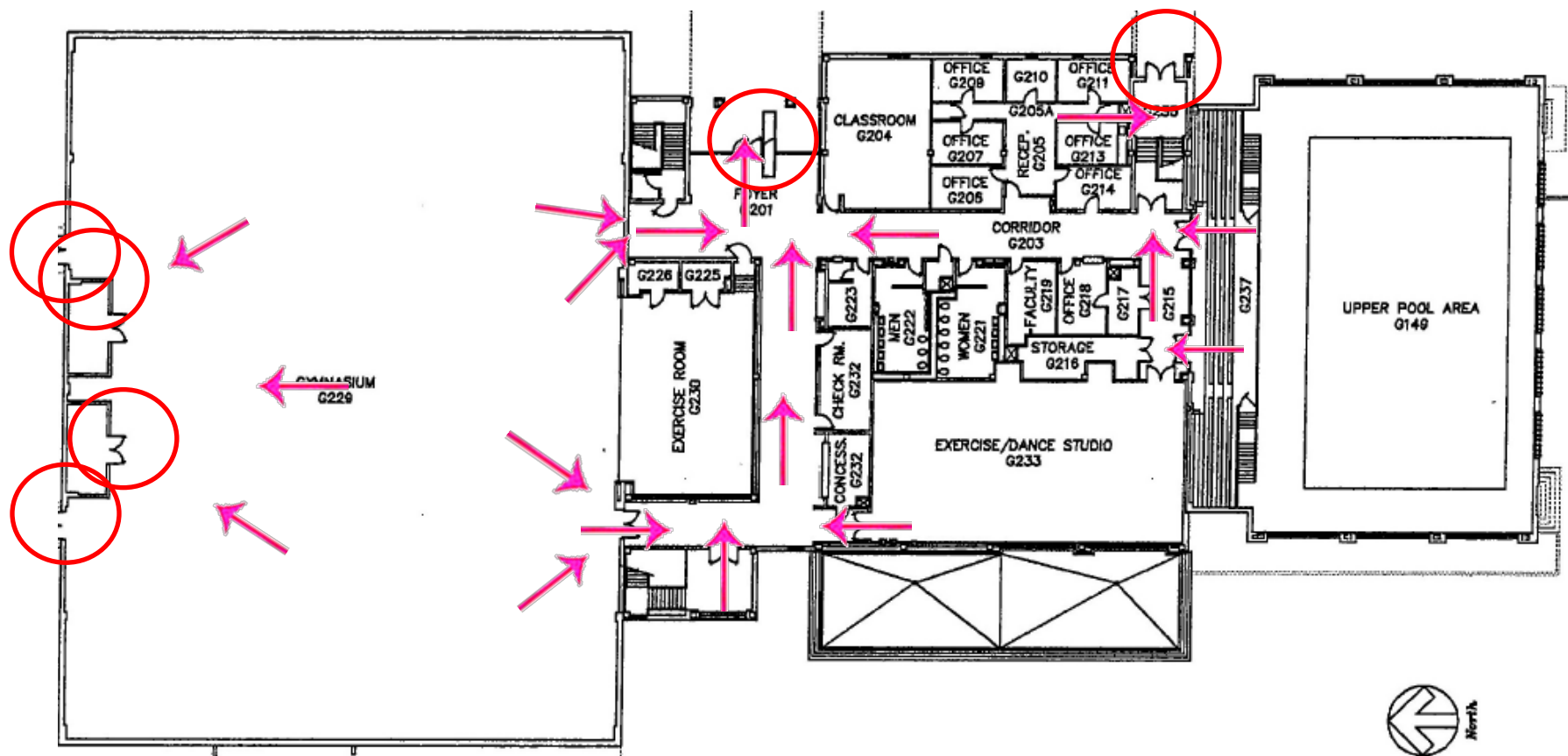


Severe Weather and Evacuation Plan-PE Floor 2

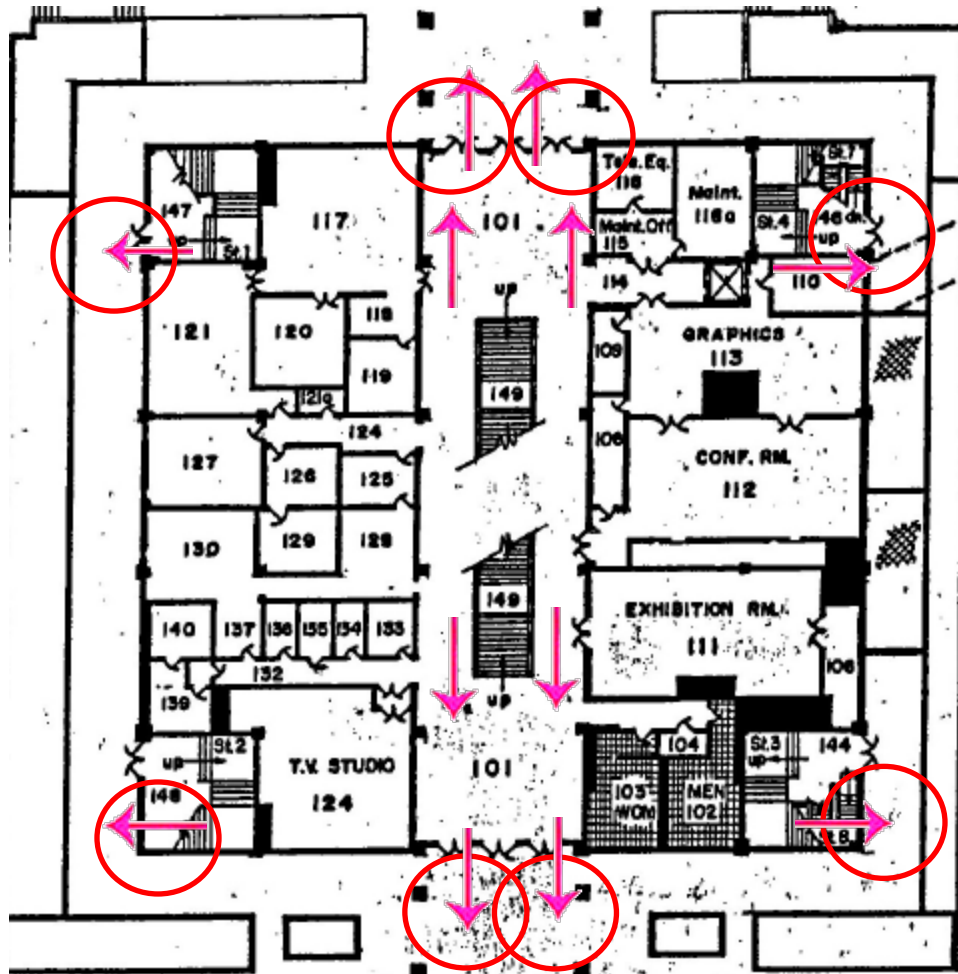
Evacuation: Evacuate through the nearest marked exit (Circled) using the route (Arrows) as marked.

Emergency Assembly Point (EAPs): P-6 & P-9 lot.

Safe Area: Evacuate to a restroom, interior corridor, or room without windows.



Severe Weather and Evacuation Plan-IRC Floor 1



Evacuation: Evacuate through the nearest marked exit (Circled) using the route (Arrows) as marked.

Emergency Assembly Point (EAPs): P-6 & P-9 lot.

Second floor: Evacuate down stairs and outside.

Third floor: Evacuate down stairs and outside.

Safe Area: Evacuate to a restroom or room without windows.

Severe Weather and Evacuation Plan-IRC Floor 2-3

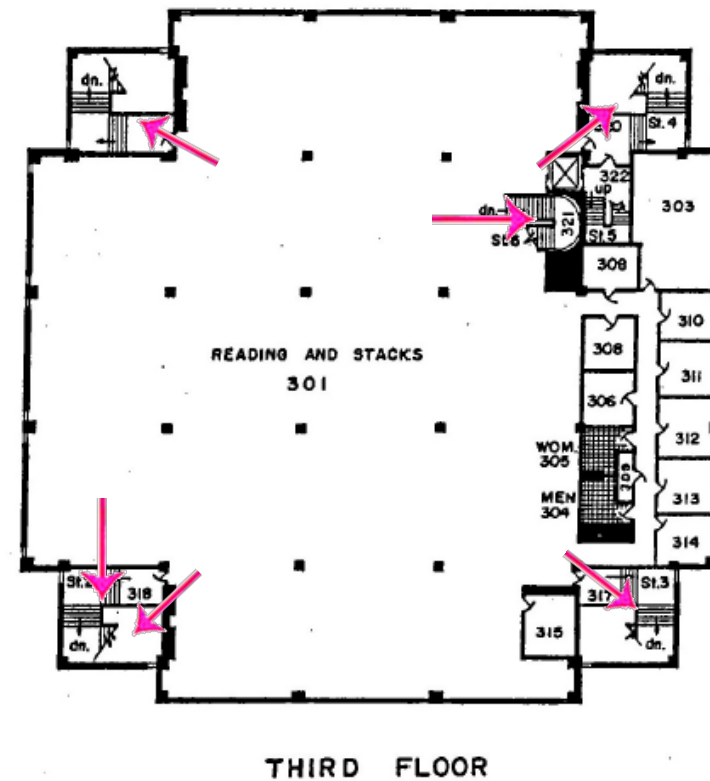
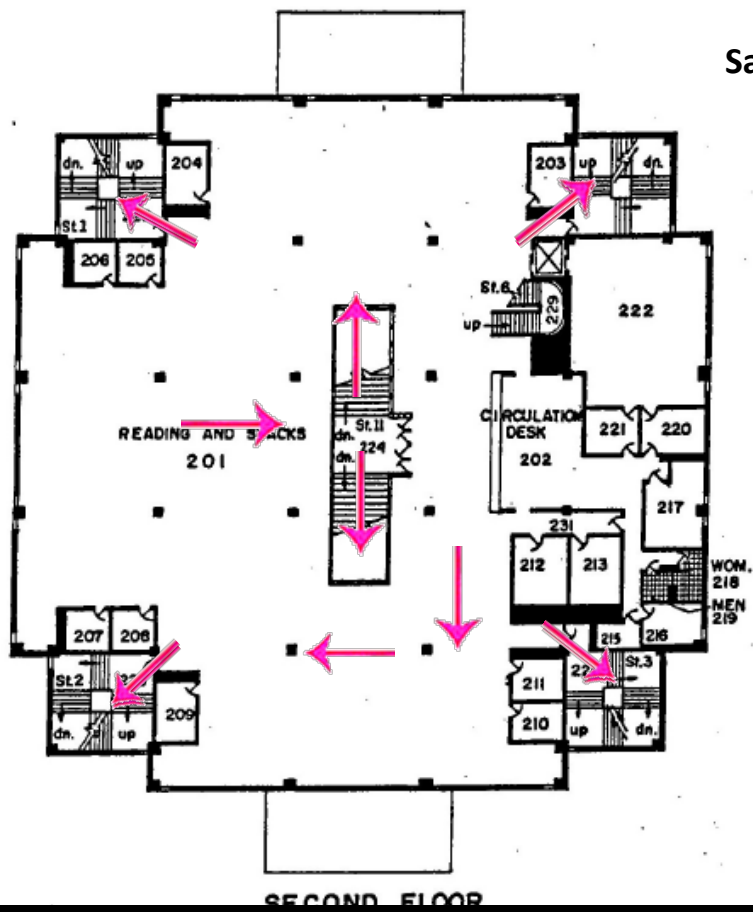
Evacuation: Evacuate through the nearest marked exit (Circled) using the route (Arrows) as marked.

Emergency Assembly Point (EAPs): P-6 & P-9 lot.

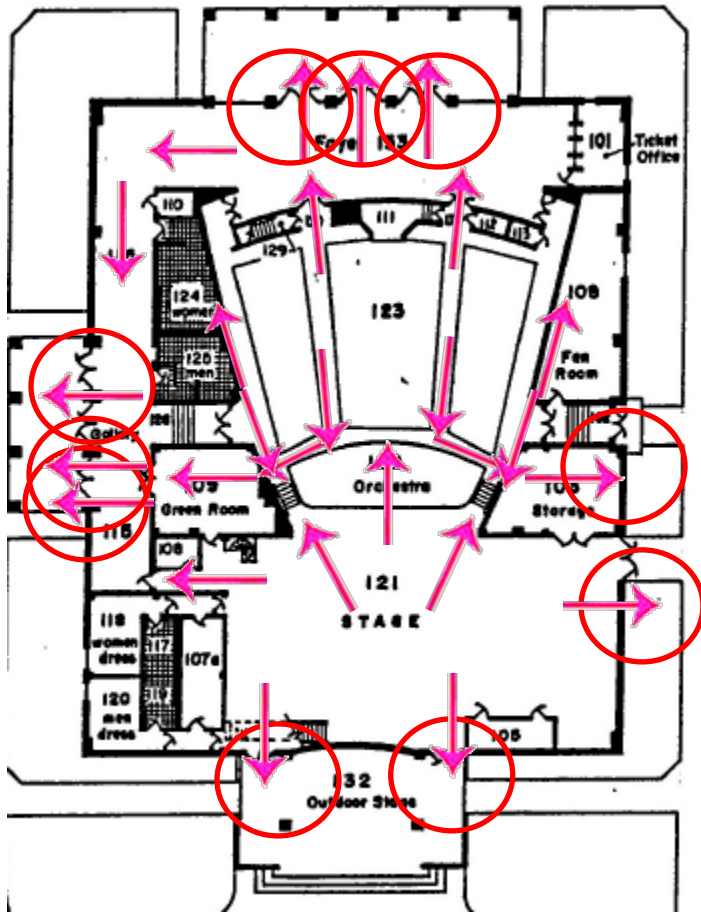
Second floor: Evacuate down stairs and outside.

Third floor: Evacuate down stairs and outside.

Safe Area: Evacuate to a restroom or room without windows.



Severe Weather and Evacuation Plan-Theater

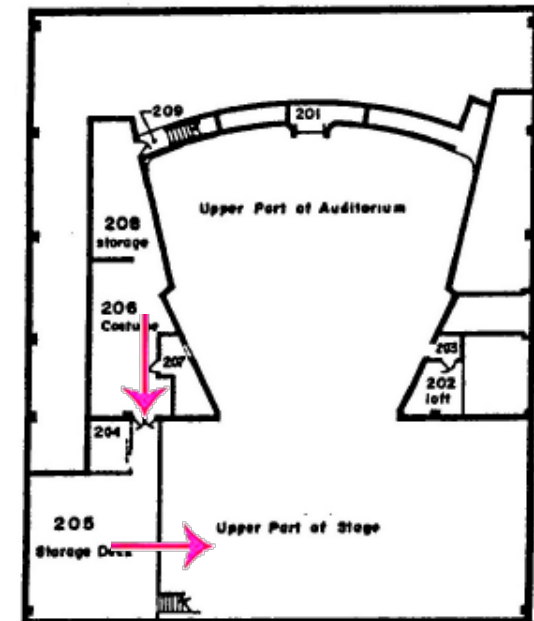


Evacuation: Evacuate through the nearest marked exit (Circled) using the route (Arrows) as marked.

Emergency Assembly Point (EAPs): P-1 & P-3 lot.

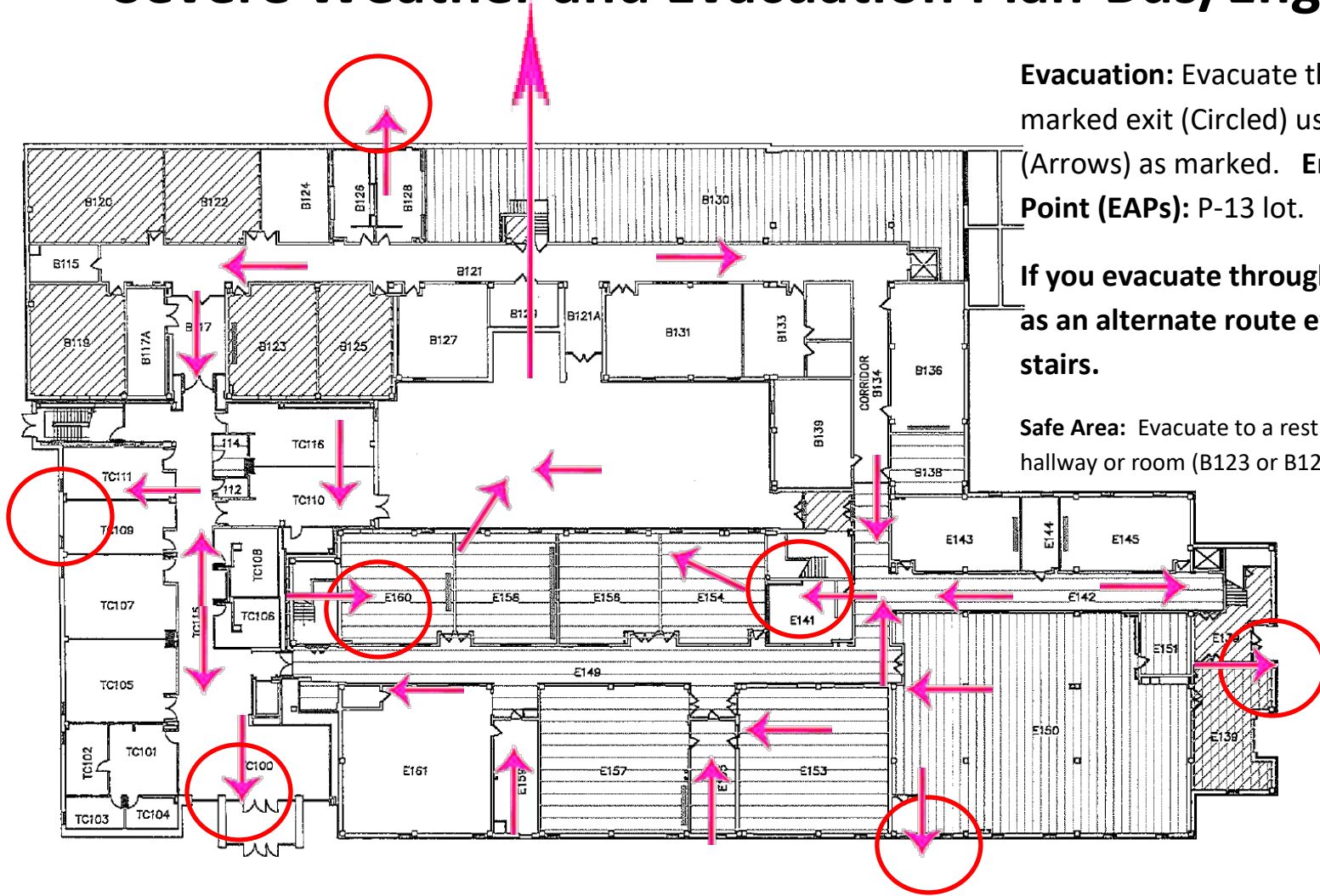
Second floor: Evacuate down stairs and outside.

Safe Area: Evacuate to a restroom or interior hallway or room (109) without windows.



SECOND FLOOR

Severe Weather and Evacuation Plan-Bus/Eng 1st floor

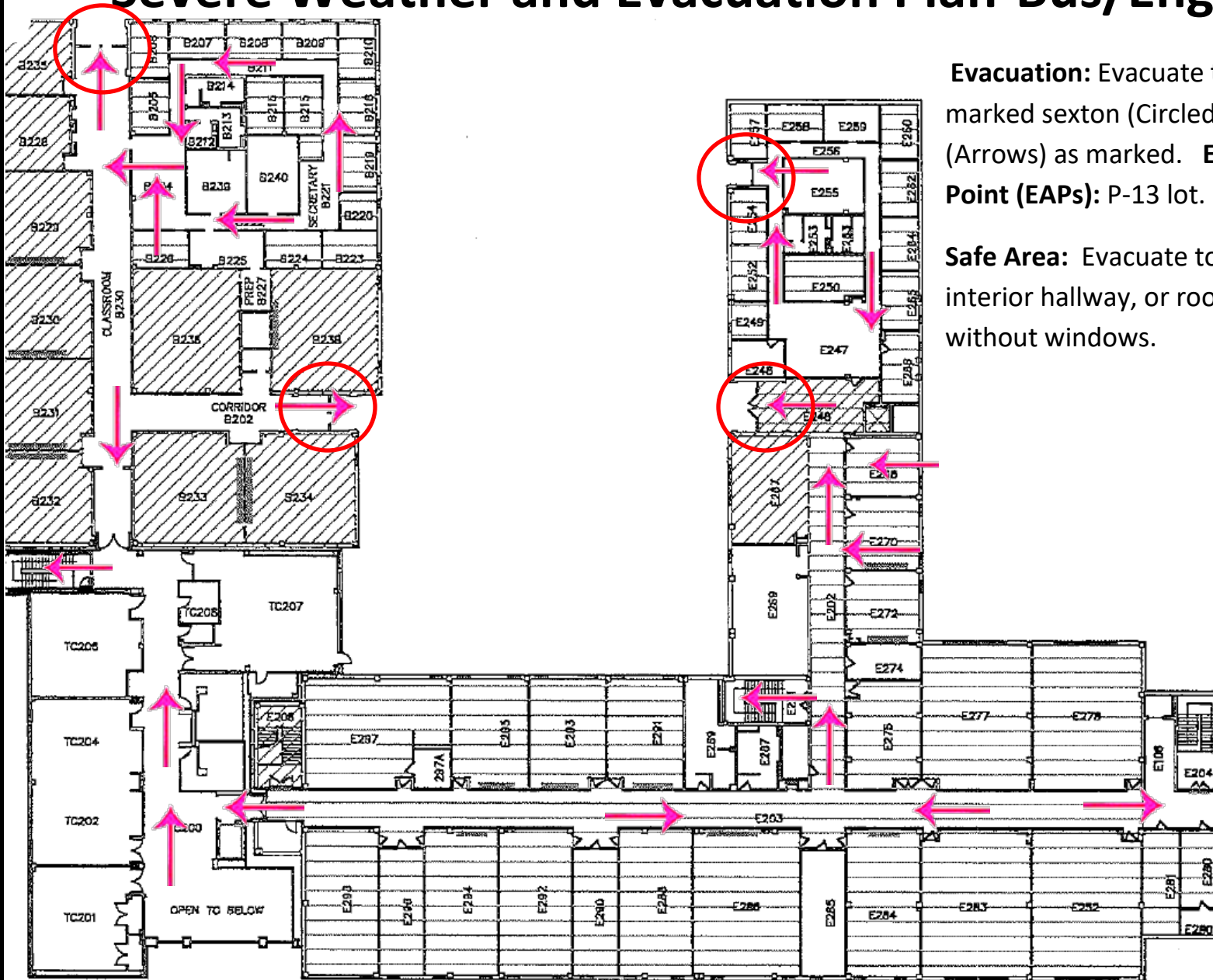


Evacuation: Evacuate through the nearest marked exit (Circled) using the route (Arrows) as marked. **Emergency Assembly Point (EAPs):** P-13 lot.

If you evacuate through the garden area as an alternate route evacuate up the stairs.

Safe Area: Evacuate to a restroom or interior hallway or room (B123 or B125) without windows.

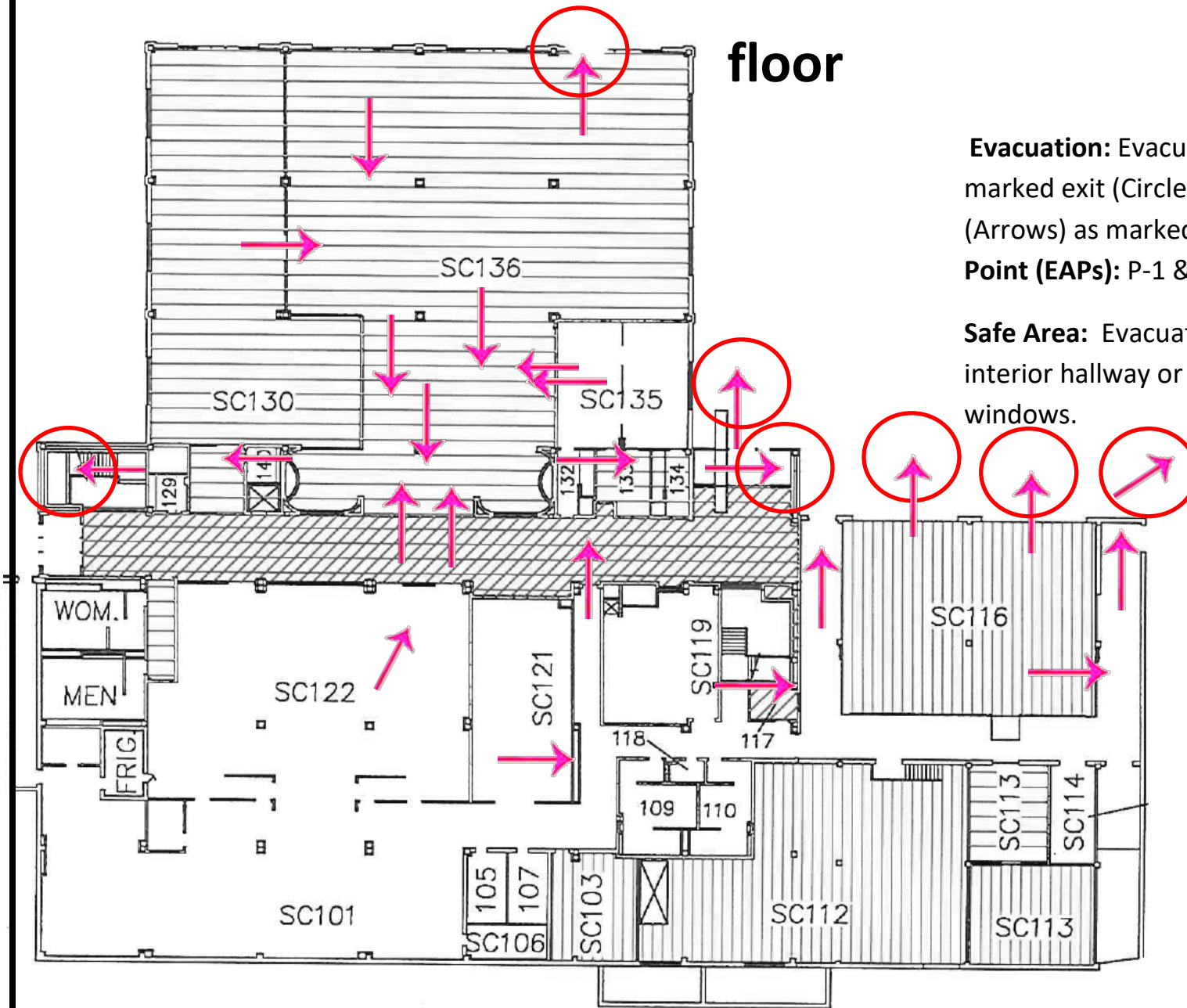
Severe Weather and Evacuation Plan-Bus/Eng 2nd floor



Evacuation: Evacuate through the nearest marked sexton (Circled) using the route (Arrows) as marked. **Emergency Assembly Point (EAPs):** P-13 lot.

Safe Area: Evacuate to a restroom, interior hallway, or room (B123 or B125) without windows.

Severe Weather and Evacuation- Student Center 1st floor

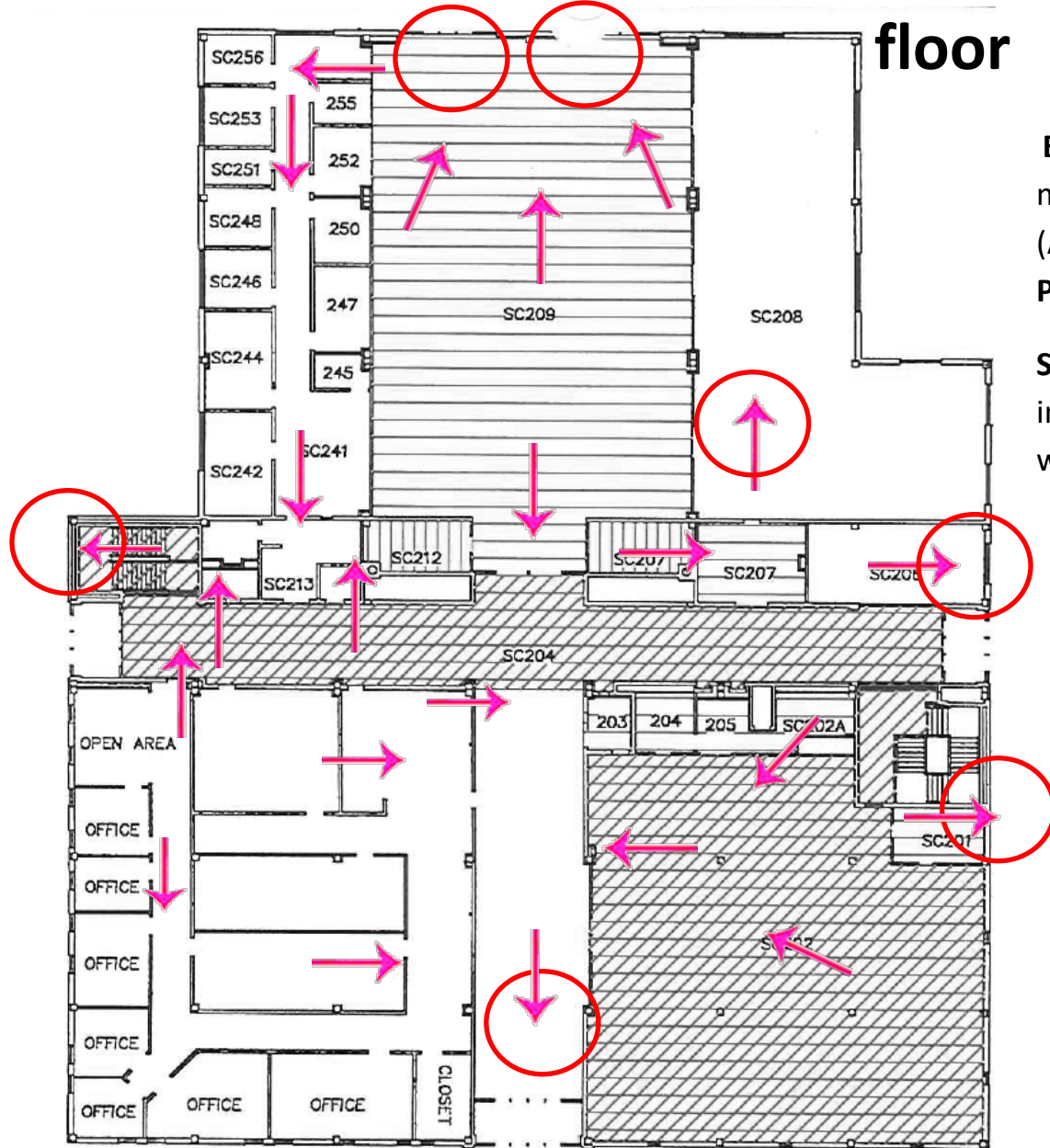


Evacuation: Evacuate through the nearest marked exit (Circled) using the route (Arrows) as marked. **Emergency Assembly Point (EAPs):** P-1 & P-3 lot.

Safe Area: Evacuate to a restroom or interior hallway or room (SC113) without windows.

Severe Weather and Evacuation- Student Center 2nd

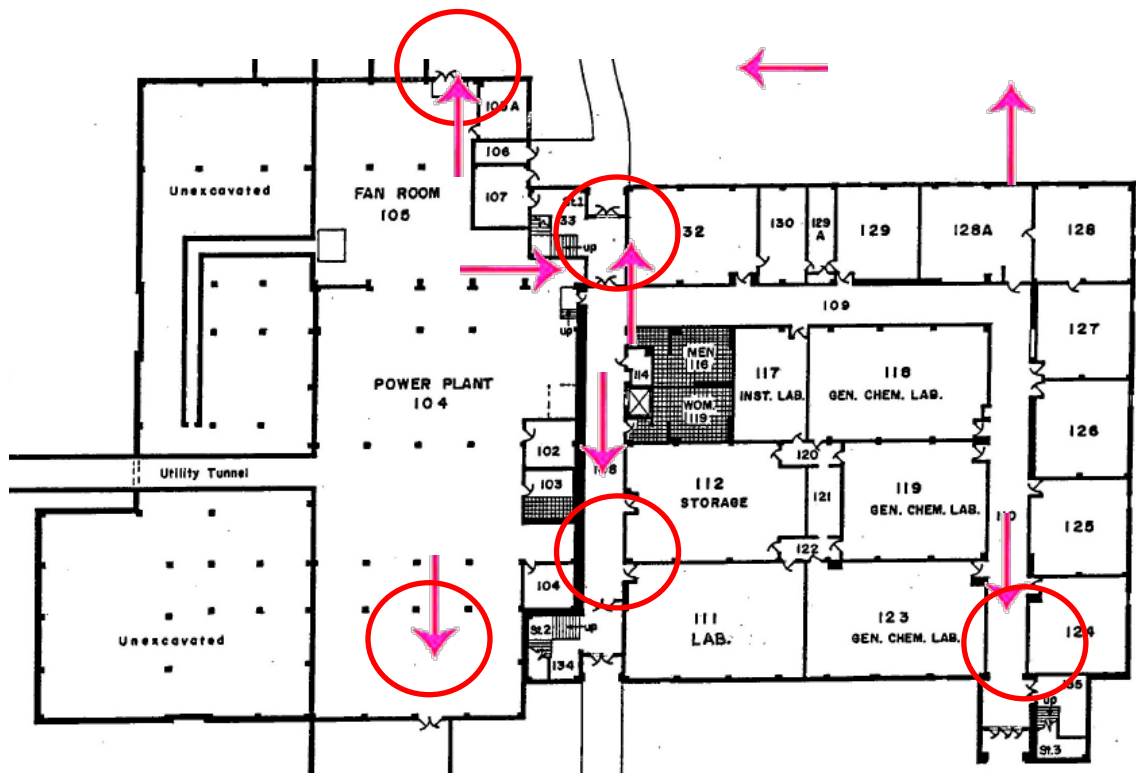
floor



Evacuation: Evacuate through the nearest marked exit (Circled) using the route (Arrows) as marked. **Emergency Assembly Point (EAPs):** P-1 & P-3 lot.

Safe Area: Evacuate to a restroom, interior hallway, or room without windows.

Severe Weather and Evacuation- Science and Math 1st



Evacuation: Evacuate through the nearest marked exit (Circled) using the route (Arrows) as marked. **Emergency Assembly Point (EAPs):** P-13 lot.

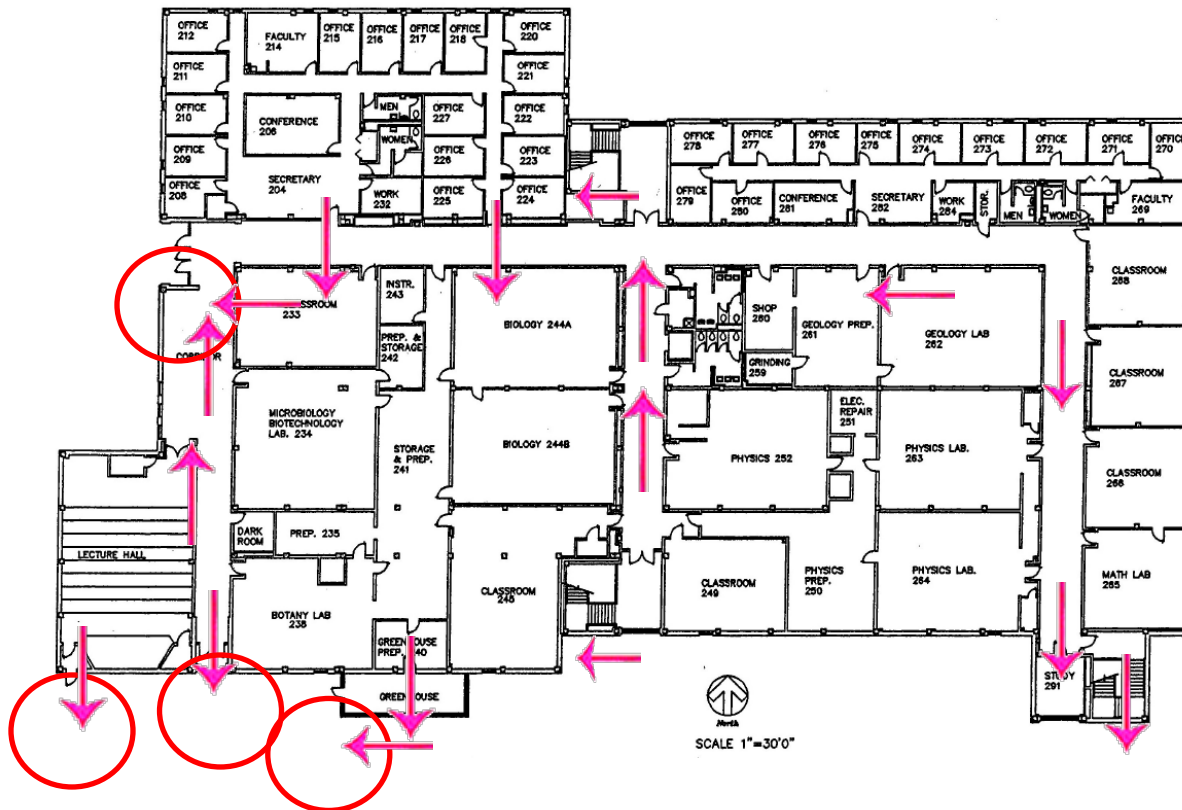
Safe Area: Evacuate to a restroom, interior hallway, or room without windows.

Severe Weather and Evacuation- Science and Math 2nd

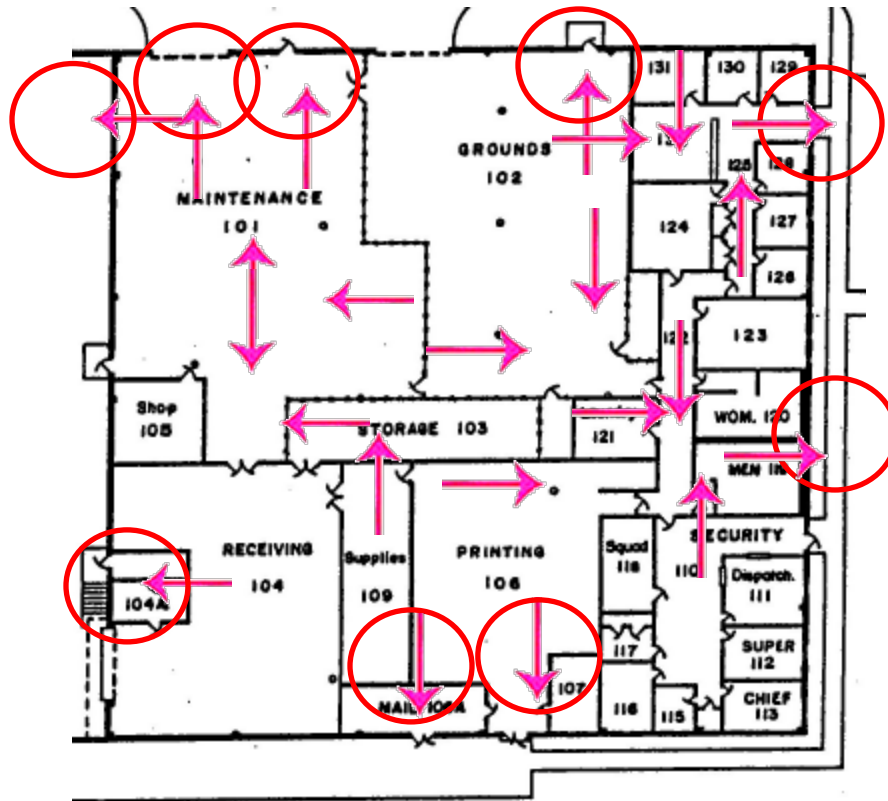
Evacuation: Evacuate through the nearest marked exit (Circled) using the route (Arrows) as marked.

Emergency Assembly Point (EAPs): P-13 lot.

Safe Area: Evacuate to a restroom, interior hallway, or room without windows.



Severe Weather and Evacuation Plan-Service/Police



Evacuation: Evacuate through the nearest marked exit (Circled) using the route (Arrows) as marked. **Emergency Assembly Point (EAPs):** P-18 lot.

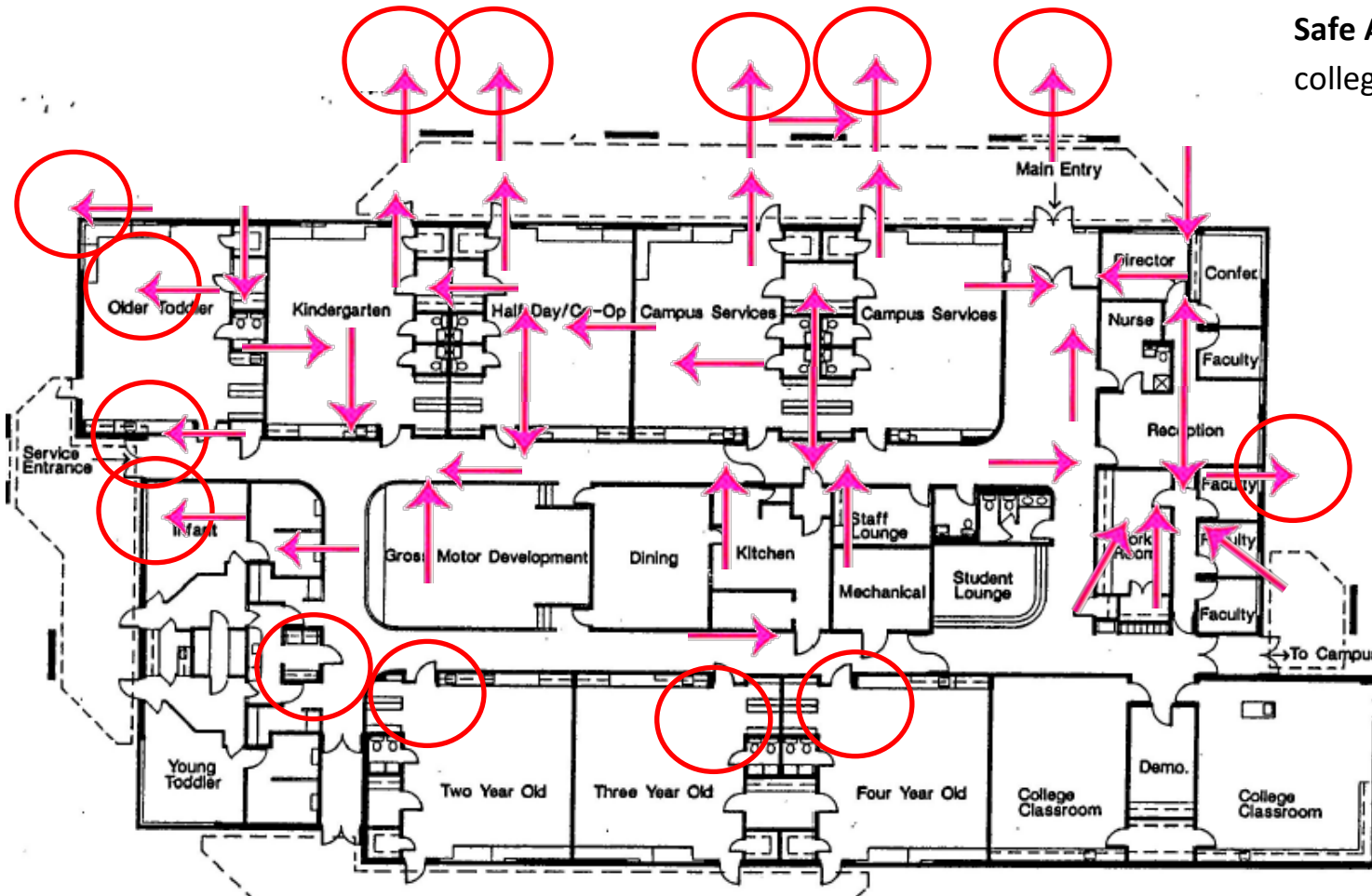
Safe Area: Evacuate to a restroom or interior hallway or room (106 or 110) without windows.

Severe Weather and Evacuation Plan- Childcare

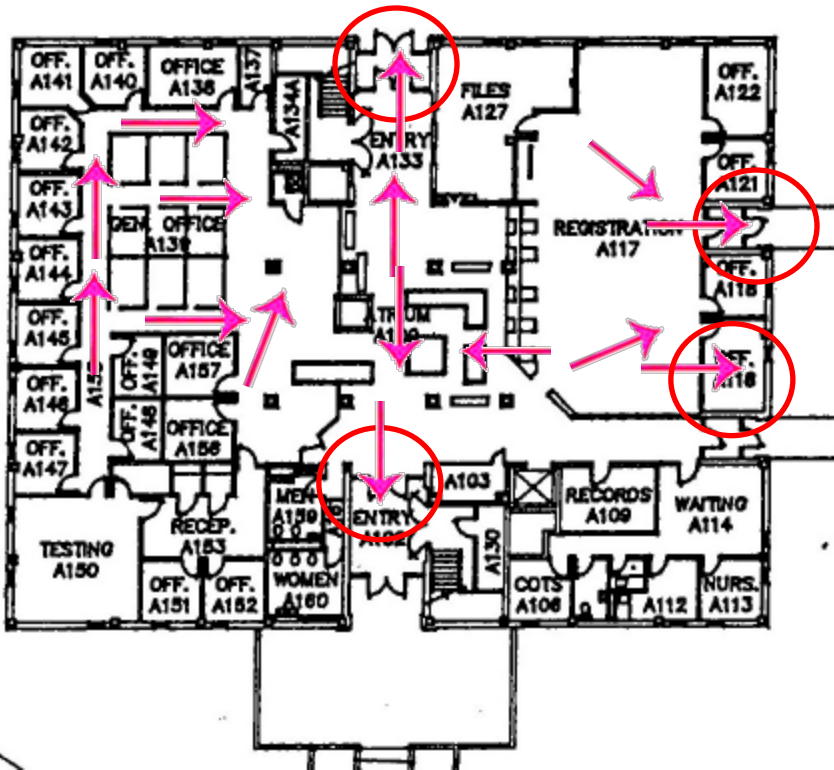
Evacuation: Evacuate through the nearest marked exit (Circled) using the route (Arrows) as marked.

Emergency Assembly Point (EAPs): P-19 lot. As per plan (primary and off-center) posted in room.

Safe Area: evacuate to the college classrooms.



Severe Weather and Evacuation Plan-Admin

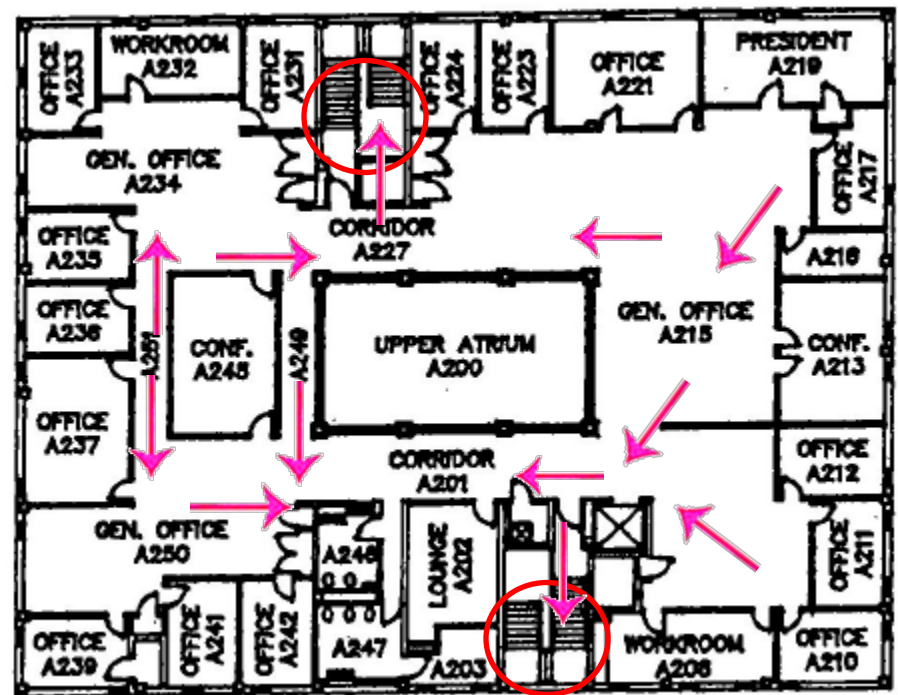


Evacuation: Evacuate through the nearest marked exit (Circled) using the route (Arrows) as marked. Second floor descend the stairs (Circled) then evacuate out the door.

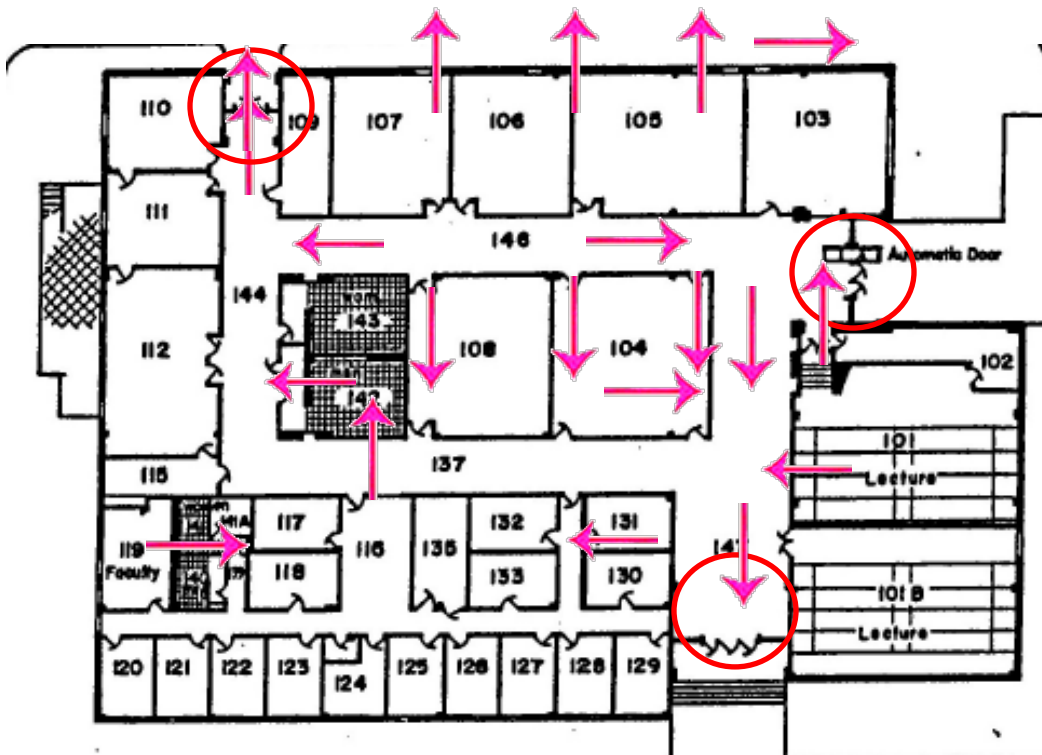
Emergency Assembly Point (EAPs): P-6 & P-9 lot.

Safe Area: Evacuate to a restroom, stairway, or interior hallway or room (109 and 127) without windows.

Second Floor



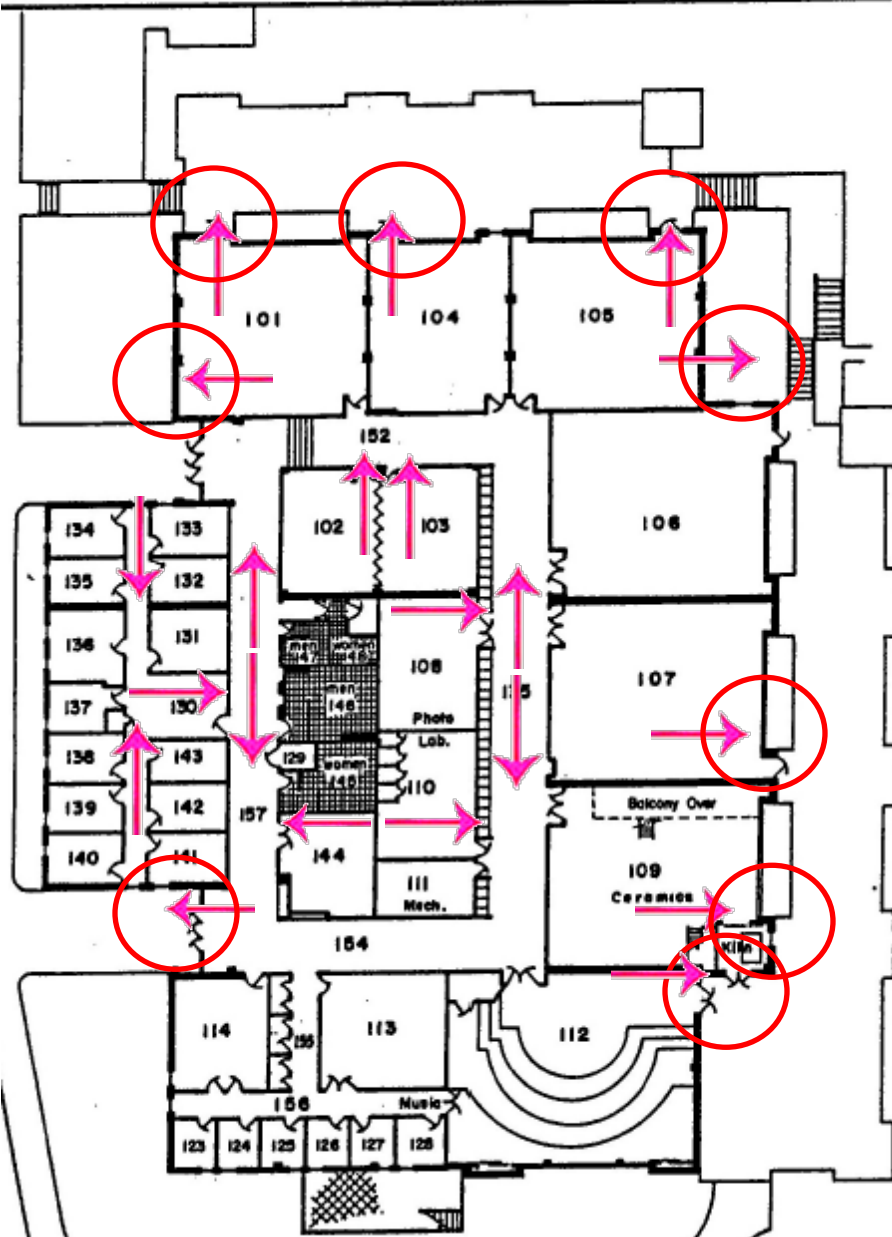
Severe Weather and Evacuation Plan-SS



Evacuation: Evacuate through the nearest marked exit (Circled) using the route (Arrows) as marked. **Emergency Assembly Point (EAPs):** P-1 & P-3 lot.

Safe Area: Evacuate to a restroom or interior hallway or room (108 and 104) without windows.

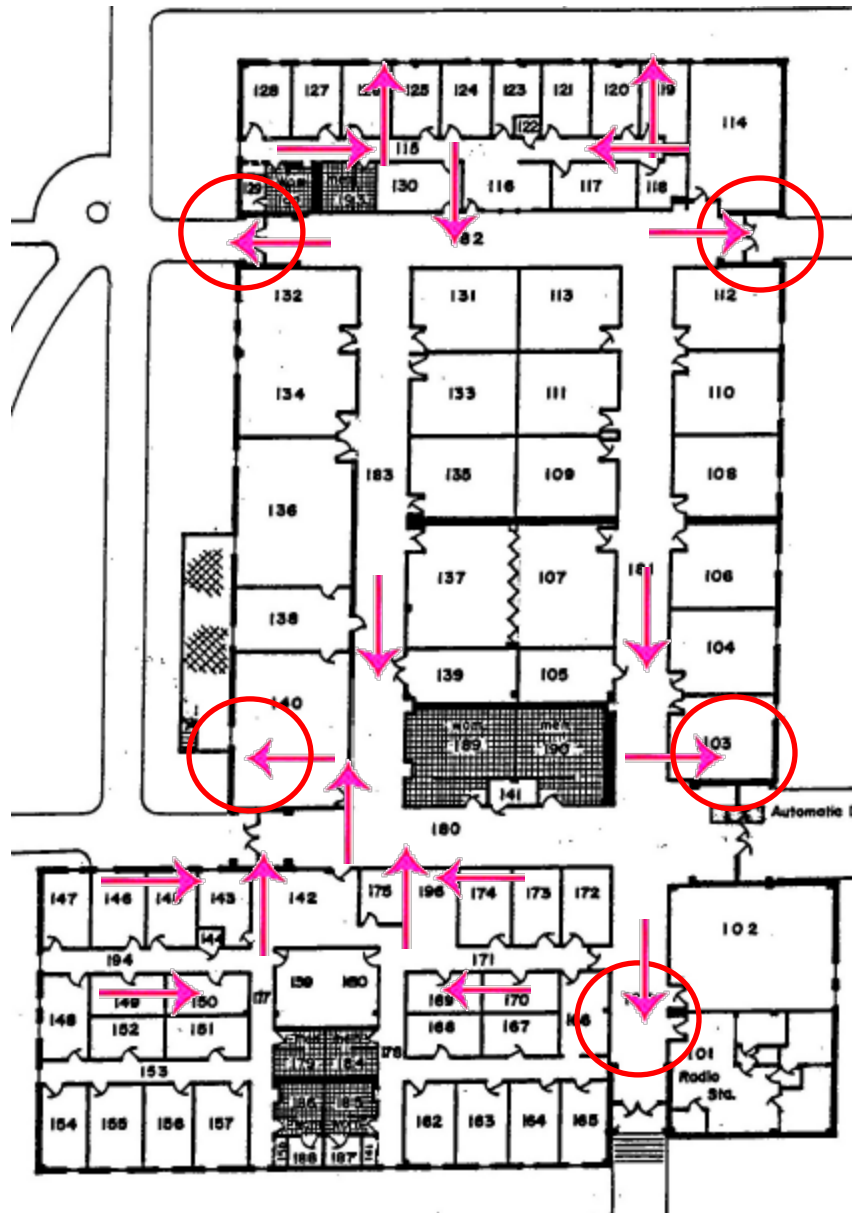
Severe Weather and Evacuation Plan- Humanities



Evacuation: Evacuate through the nearest marked exit (Circled) using the route (Arrows) as marked. **Emergency Assembly Point (EAPs):** P-1 & P-3 lot.

Safe Area: Evacuate to a restroom or interior hallway or room without windows.

Severe Weather and Evacuation Plan-Communications



Evacuation: Evacuate through the nearest marked exit (Circled) using the route (Arrows) as marked. **Emergency Assembly Point (EAPs):** P-1 & P-3 lot.

Safe Area: Evacuate to a restroom or interior hallway or room without windows.

SEVERE WEATHER SAFE AREA LOCATIONS & EMERGENCY EXITS

